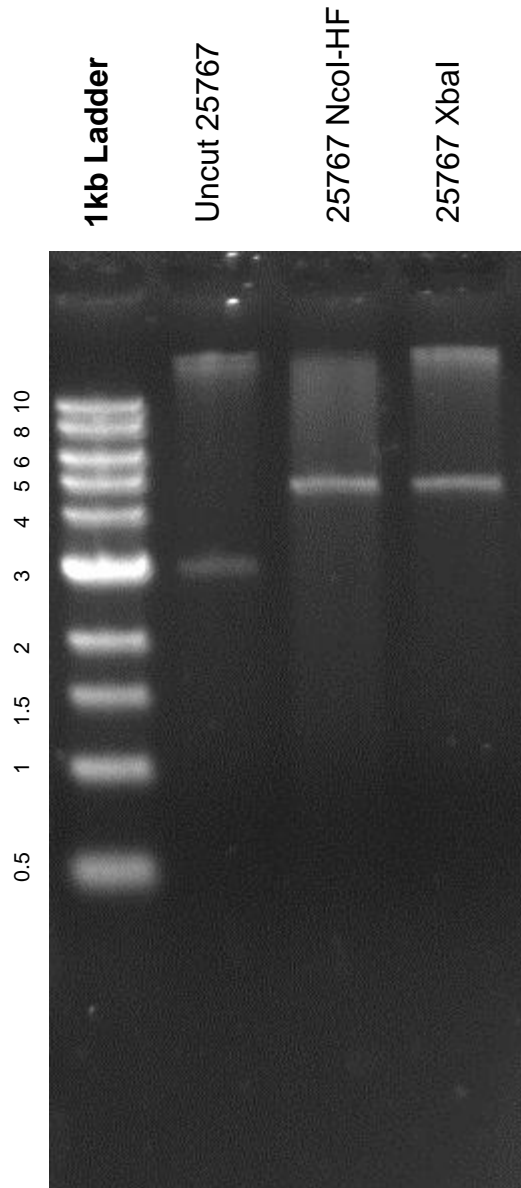


This gel depicts the NEB 1kb ladder and a digestion of the plasmid 25767 with the following enzymes: NcoI+ HF single digest, XbaI single digest

Plasmid 25767
pEN_TRE_GFP



DNA digested with NcoI-HF single digest and XbaI single digest overnight.
Gel: 0.8% TAE stained with 100 ml 1X TAE and 5uL of ethidium bromide
Ran for 2 hours and 40 minutes at **47** volts