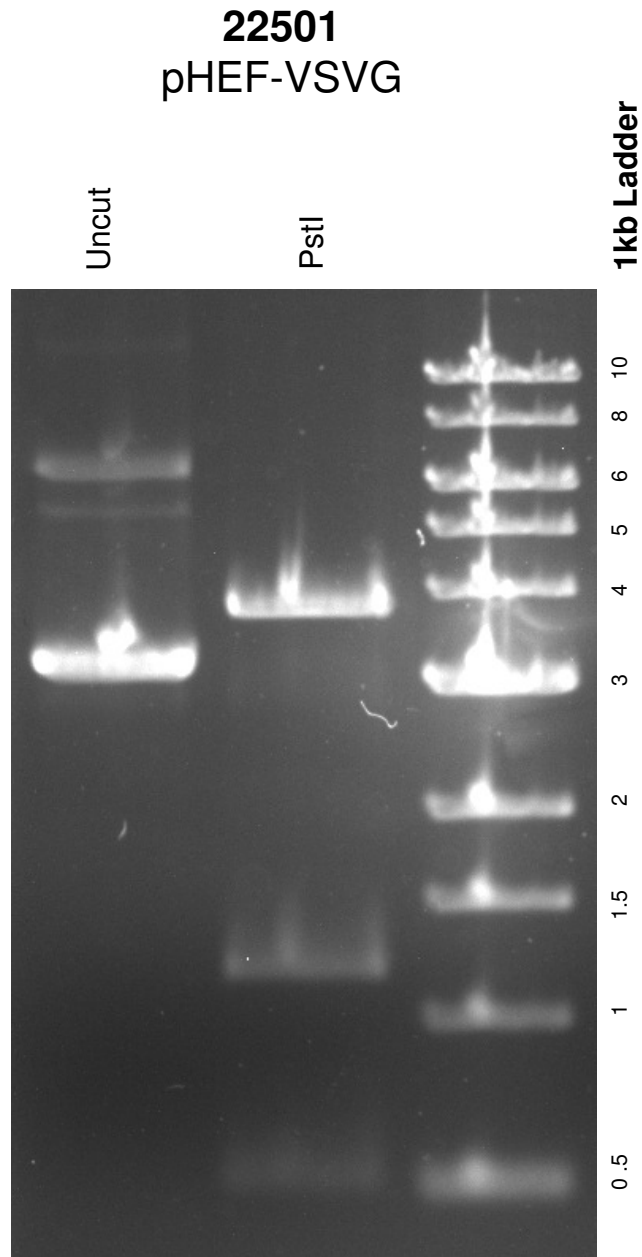


This gel depicts the NEB 1kb ladder and a digestion of the plasmid **pHEF-VSVG** with the following enzyme: **PstI**



DNA digested with **PstI** for **1** hour
Gel: 0.8% TAE stained with 100 ml 1X TAE and 5uL of ethidium bromide
Ran for 1 hour 50 minutes at **70** volts