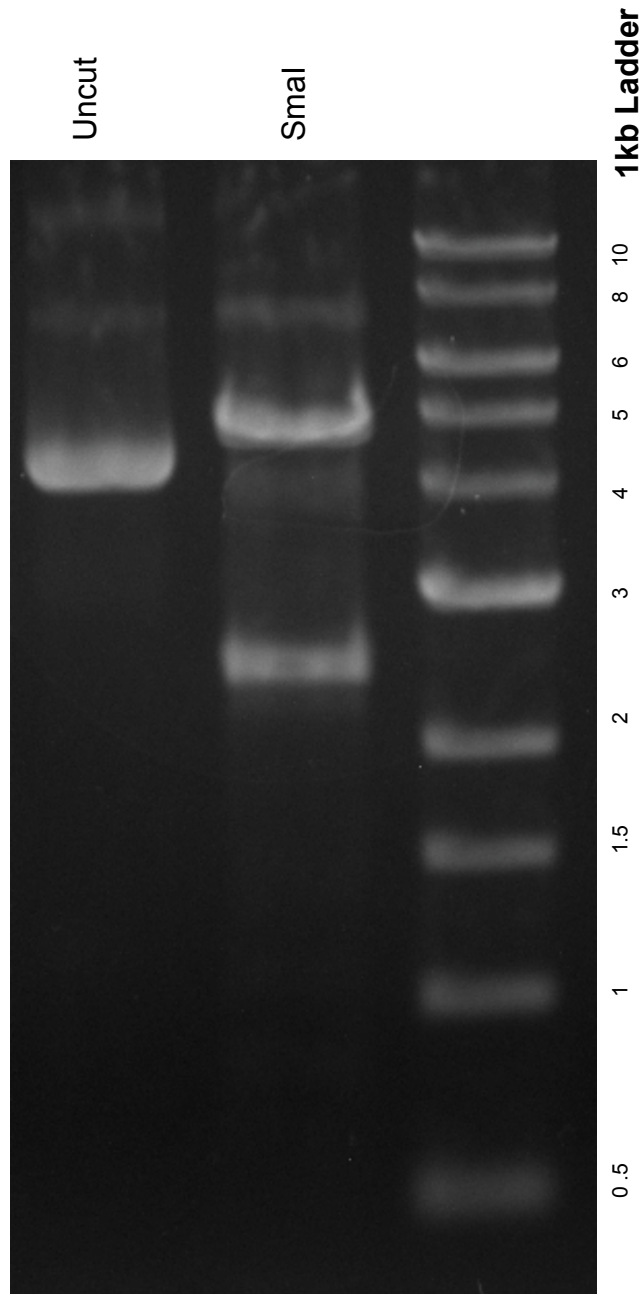


This gel depicts the NEB 1kb ladder and a digestion of the plasmid pAAV-FLEX-hGTB with the following enzymes: **SmaI**

26196
pAAV-FLEX-hGTB



DNA digested with **SmaI** for **1** hour
Gel: 0.8% TAE stained with 100 ml 1X TAE and 5uL of ethidium bromide
Ran for 1 hour and 20 minutes at **80** volts