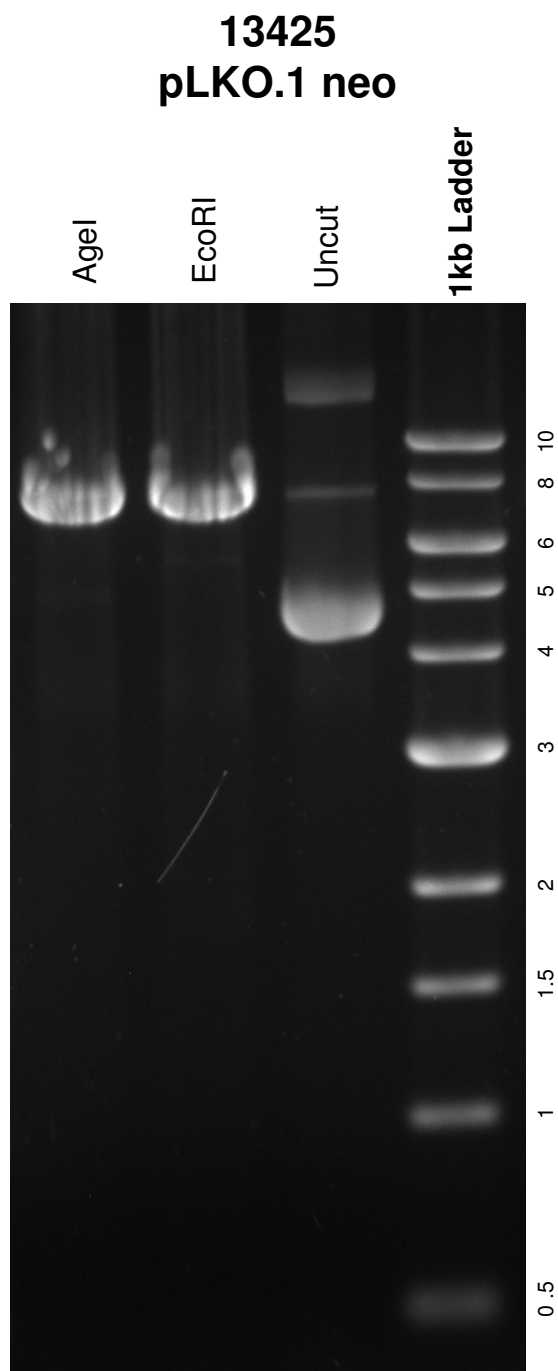


This gel depicts the NEB 1kb ladder and a digestion of the plasmid **pLKO.1 neo** with the following enzymes: single digests with AgeI and EcoRI



DNA digested with **single digests of AgeI and EcoRI** for **1** hour  
Gel: 0.8% TAE stained with 100 ml 1X TAE and 5uL of ethidium bromide  
Ran for 1.5 hours at **80** volts