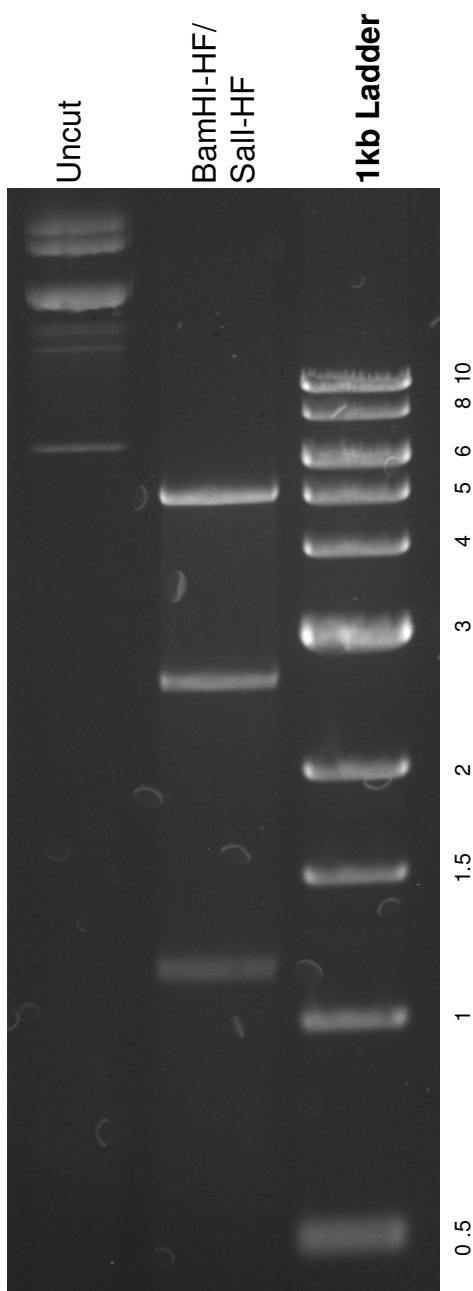


This gel depicts the NEB 1kb ladder and a digestion of the plasmid **pBABE puro mouse IRS-1 myc** with the following enzymes:
double digest with BamHI-HF and Sall-HF

11374
pBABE puro mouse IRS-1 myc



DNA digested with **double digest with BamHI-HF and Sall-HF** for **1** hour
Gel: 0.8% TAE stained with 100 ml 1X TAE and 5uL of ethidium bromide
Ran for 2 hours at **82** volts