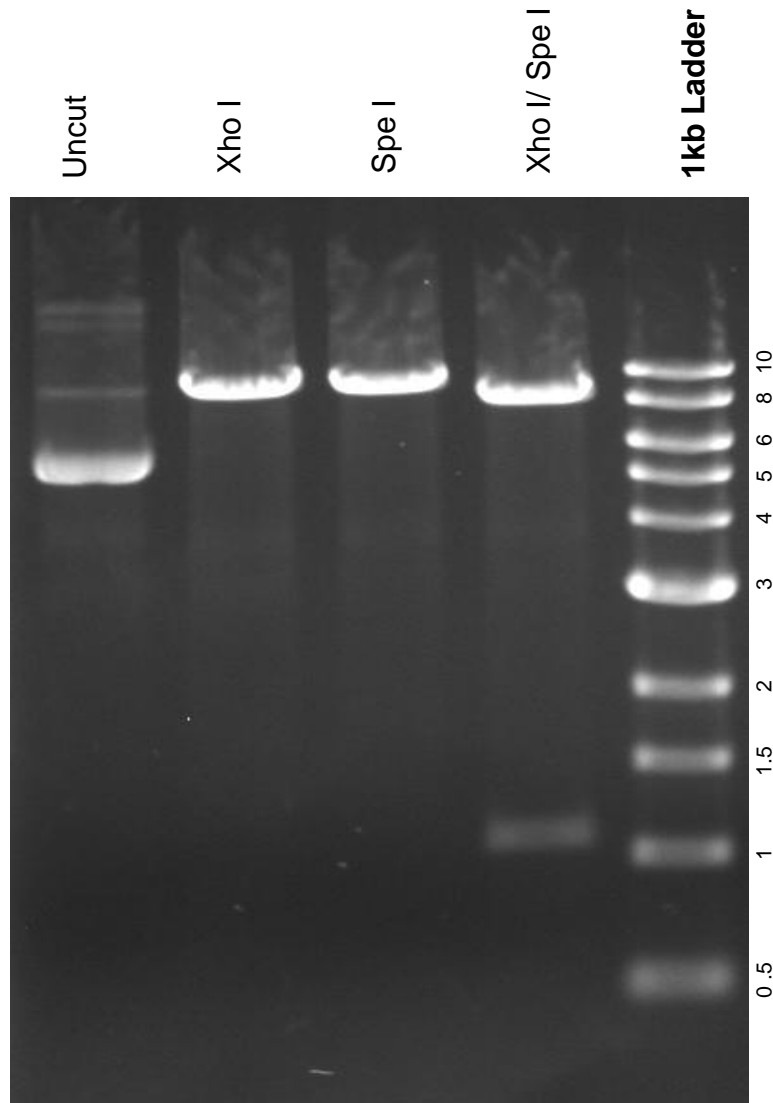


This gel depicts the NEB 1kb ladder and a digestion of the plasmid **pLX302** with the following enzymes: Xho I and Spe I single and double digest

25896
pLX302



DNA digested with **Xho I** and **Spe I** single and double digest for **1** hour
Gel: 0.8% TAE stained with 100 ml 1X TAE and 5uL of ethidium bromide
Ran for 1.5 hours at 72 volts