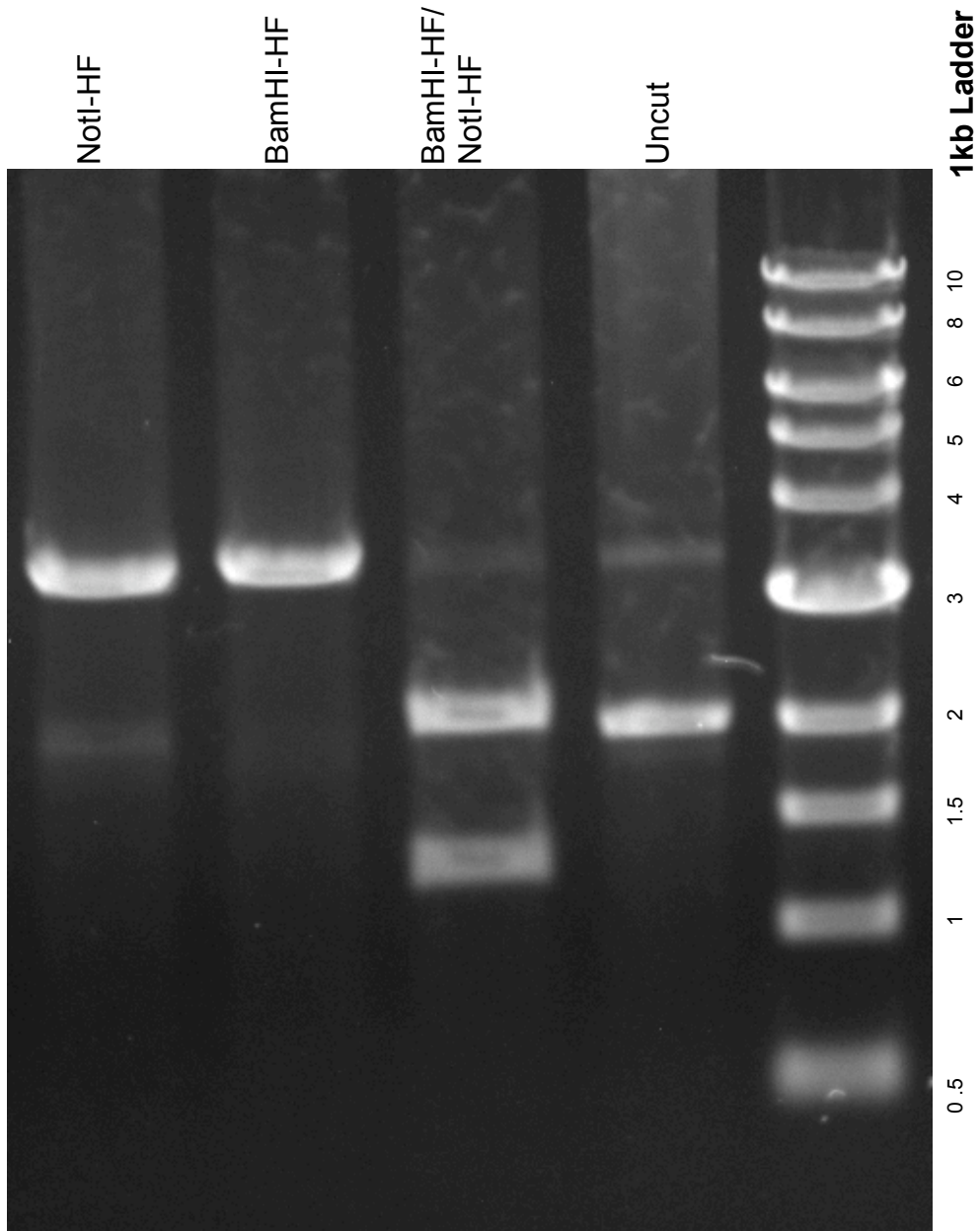


This gel depicts the NEB 1kb ladder and a digestion of the plasmid pMYO with the following enzymes: **NotI-HF, BamHI-HF and NotI-HF/BamHI-HF double digest**

**Plasmid 34626  
pMYO**



DNA digested with **NotI-HF, BamHI-HF and NotI-HF/BamHI-HF double digest** for 1 hour

Gel: 0.8% TAE stained with 100 ml 1X TAE and 5uL of ethidium bromide

Ran for 1 hour and 20 minutes at 80 volts