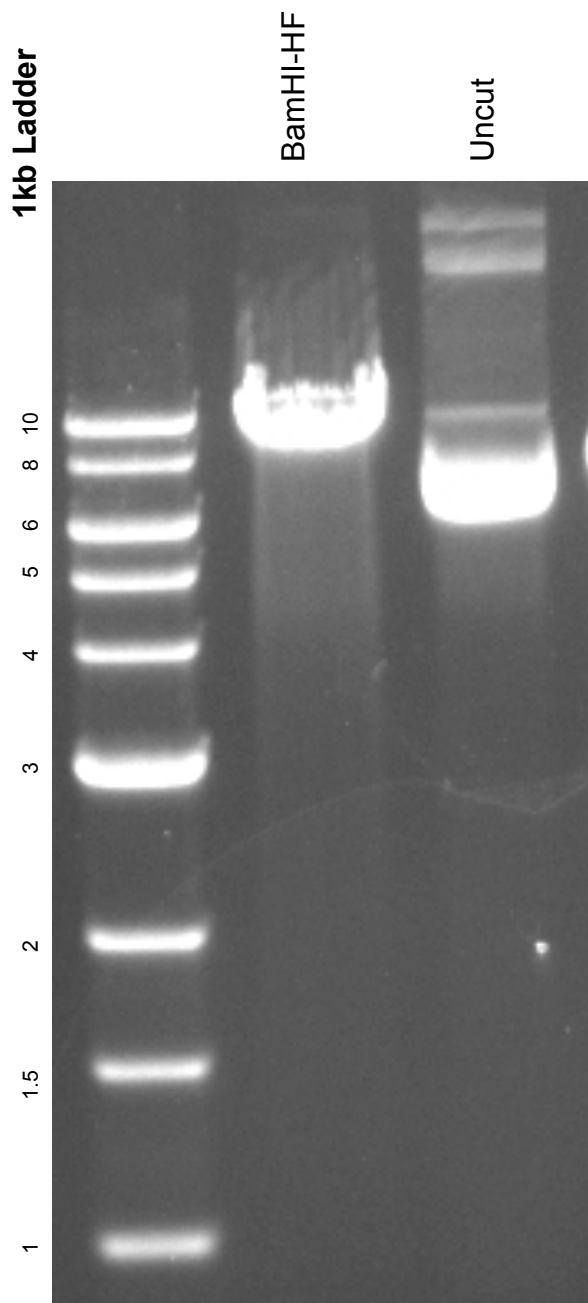


This gel depicts the NEB 1kb ladder and a digestion of the plasmid
pLenti CMV/TO V5-LUC Puro (w549-1) with the following enzymes:
BamHI-HF

19785

pLenti CMV/TO V5-LUC Puro (w549-1)



DNA digested with **BamHI-HF** for **2** hours
Gel: 0.8% TAE stained with 100 ml 1X TAE and 5uL of ethidium bromide
Ran for 1 hour and 55 minutes at **80** volts