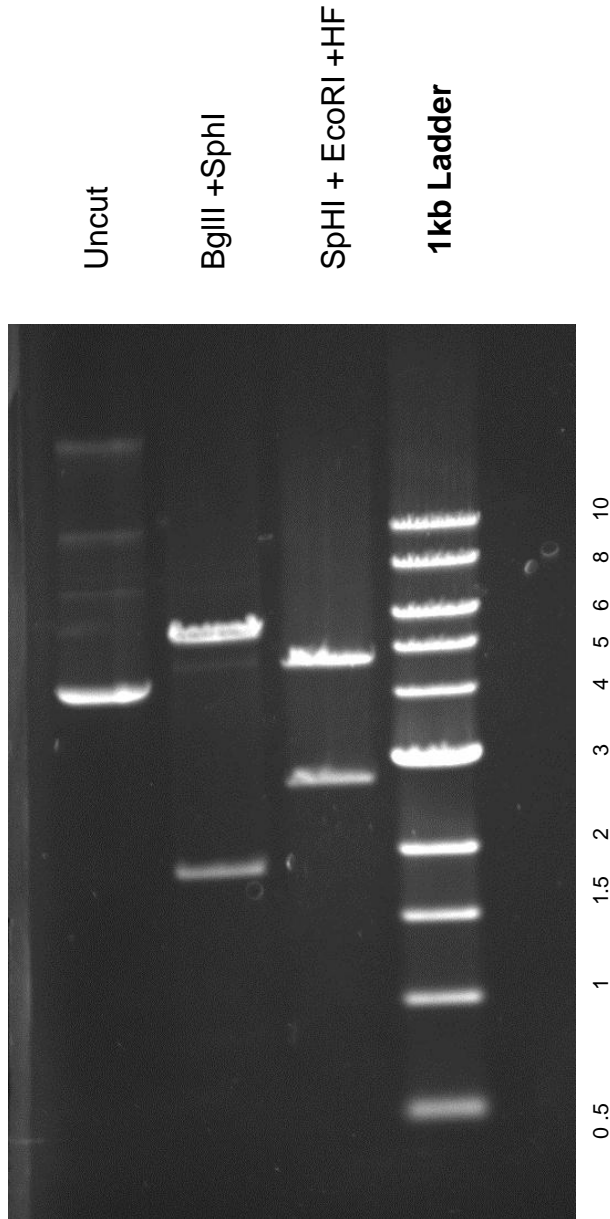


This gel depicts the NEB 1kb ladder and a digestion of the plasmid **GW1CMV-Perceval** with the following enzymes: **BglIII +SphI** , **SphI + EcoRI+HF** double digests

Plasmid 21737
GW1CMV-Perceval



DNA digested with **BglIII** and **SphI** for 4 hours, **SphI** and **EcoRI + HF** for 2 hours
Gel: 0.8% TAE stained with 100 ml 1X TAE and 5uL of ethidium bromide
Ran for 2 hours and 50 minutes at 98 volts.