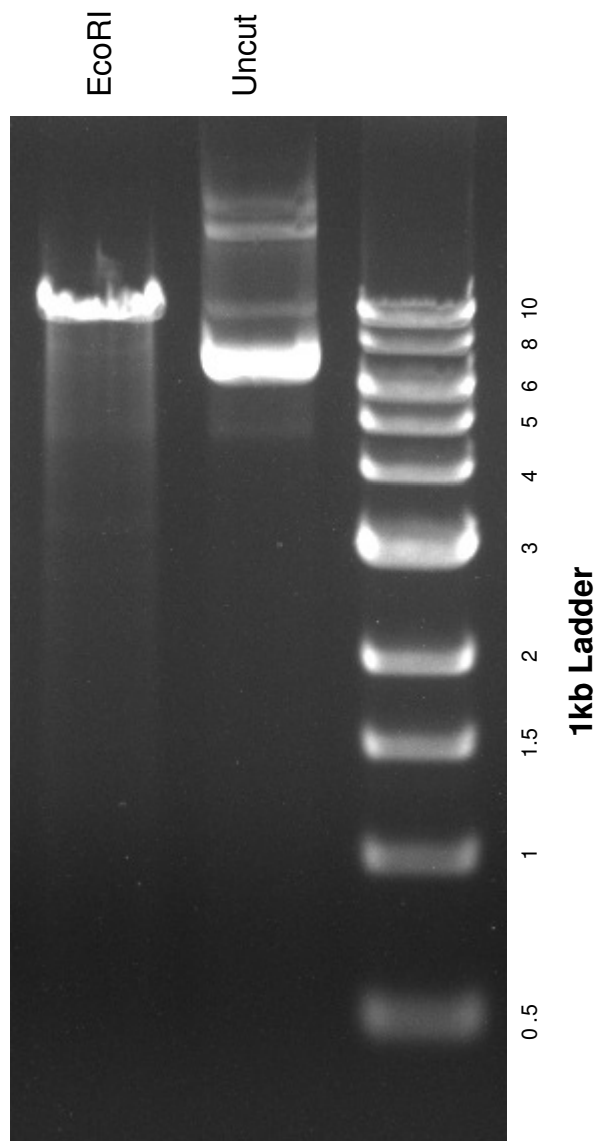


This gel depicts the NEB 1kb ladder and a digestion of the plasmid pWPXL with the following enzymes: **EcoRI**

12257
pWPXL



DNA digested with EcoRI for 1 hour

Gel: 0.8% TAE stained with 100 ml 1X TAE and 5uL of ethidium bromide

Ran for 1.5 hours at **70** volts