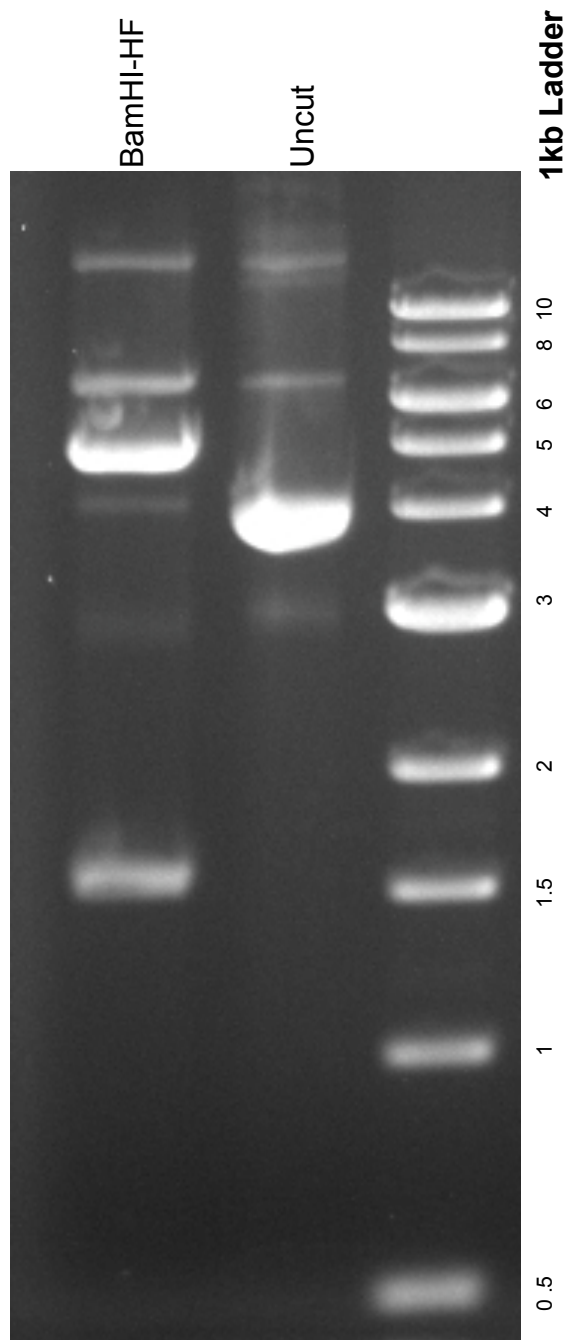


This gel depicts the NEB 1kb ladder and a digestion of the plasmid **Rb-379-928 Δ 703-737-pGex2T** with the following enzymes: BamHI-HF

21933

Rb-379-928 Δ 703-737-pGex2T



DNA digested with **BamHI-HF** for **2** hours
Gel: 0.8% TAE stained with 100 ml 1X TAE and 5uL of ethidium bromide
Ran for 1 hour and 55 minutes at **80** volts