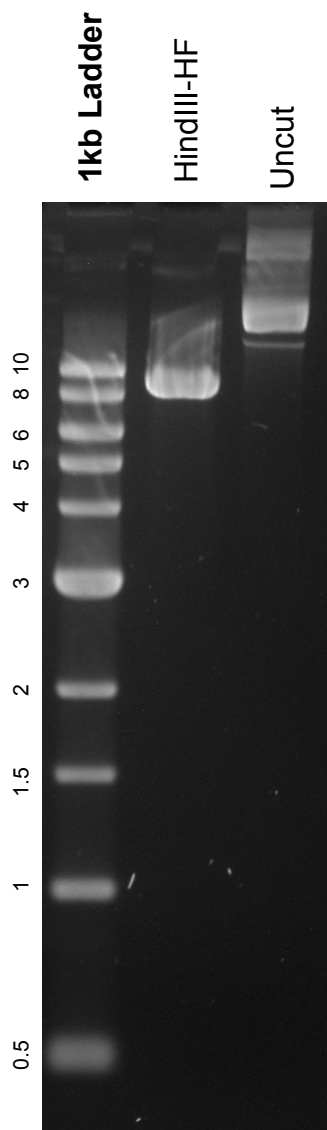


This gel depicts the NEB 1kb ladder and a digestion of the plasmid 11011: EGFR WT with the following enzymes: HindIII-HF

**Plasmid 11011
EGFR WT**



DNA digested with HindIII-HF single digest for **overnight**

Gel: 0.8% TAE stained with 100 ml 1X TAE and 5uL of ethidium bromide

Ran for 4 hours at **47** volts