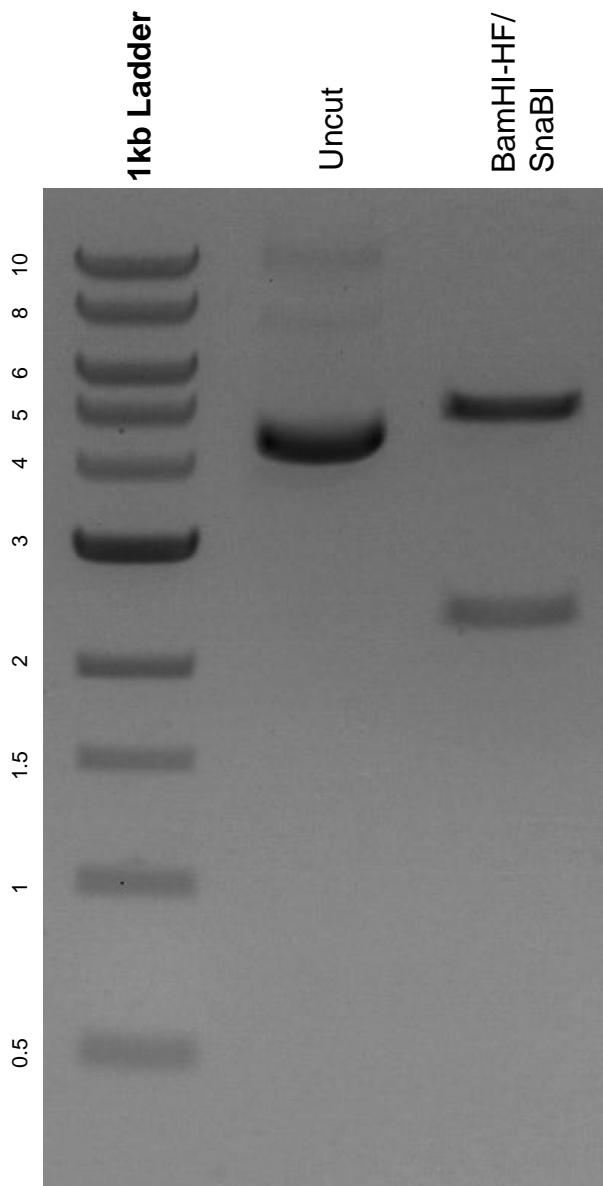


This gel depicts the NEB 1kb ladder and a digestion of the plasmid pYESir2-puro with the following enzymes: BamHI-HF and SnaBI.

**Plasmid 1769:**  
pYESir2-puro



DNA digested with a BamHI-HF/SnaBI double digest for **2 hours**.  
Gel: 0.8% agarose stained with 5 uL of ethidium bromide.  
Ran for 1.5 hours at 100 volts.