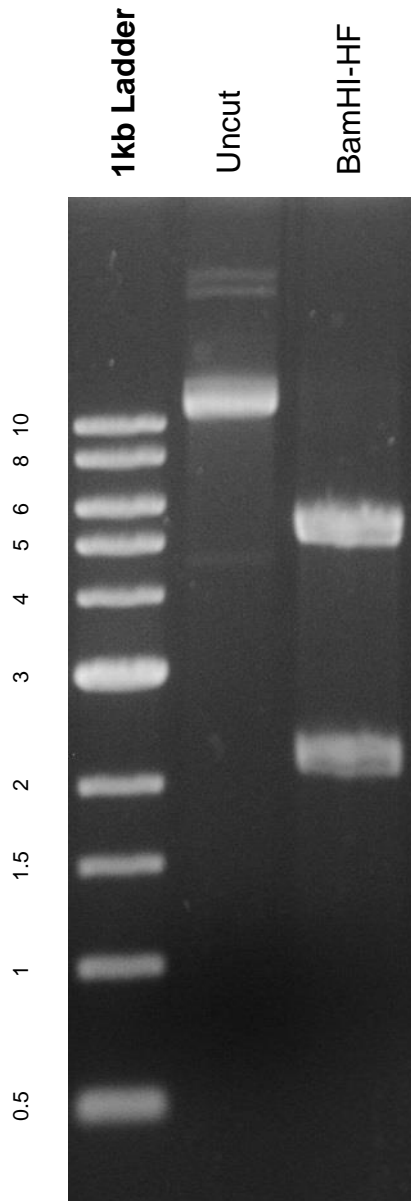


This gel depicts the NEB 1kb ladder and a digestion of the plasmid 1780 with the following enzymes: BamHI-HF

Plasmid # 1780
pBABE-neo largeTcDNA



DNA digested with BamHI-HF single digest for **2 hours**

Gel: 0.8% TAE stained with 100 ml 1X TAE and 5uL of ethidium bromide

Ran for 2.5 hours at **47** volts