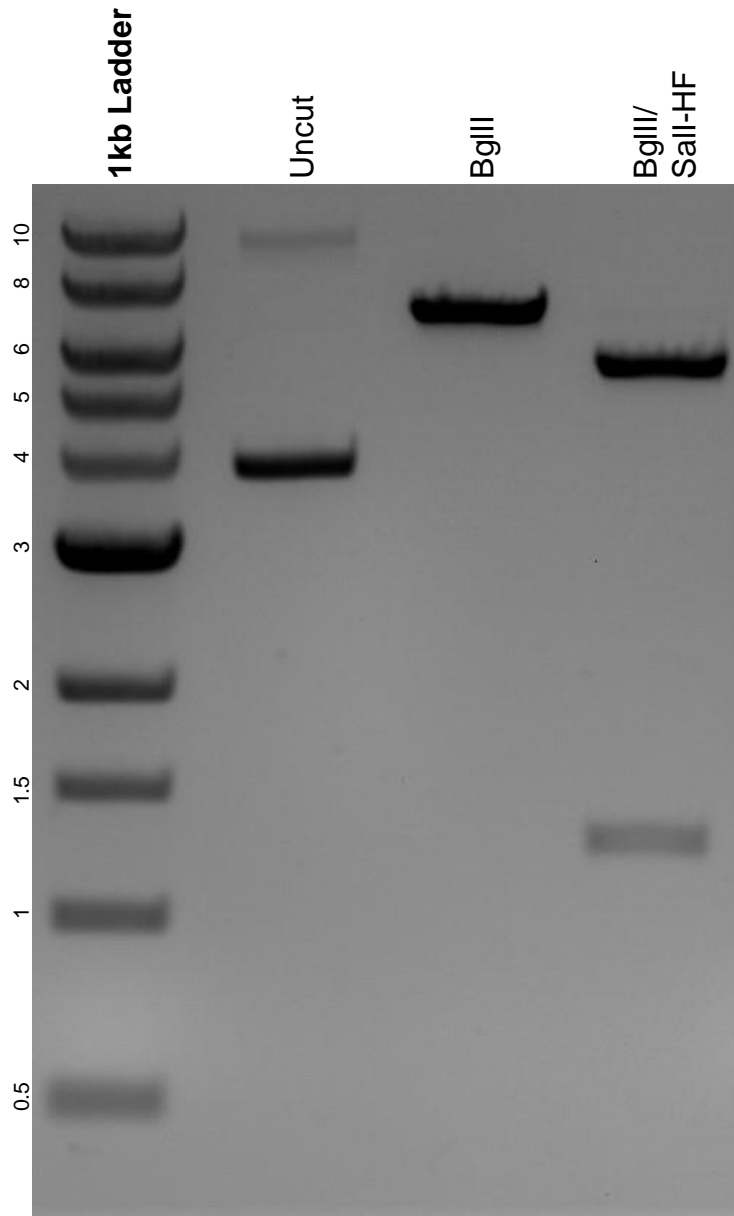


This gel depicts the NEB 1kb ladder and a digestion of the plasmid MMTV-SV40-Bssk with the following enzymes: BglII and Sall-HF

Plasmid 1824:
MMTV-SV40-Bssk



DNA digested with BglII single digest and BglII/ Sall-HF double digest for **2 hours**.
Gel: 0.8% agarose stained with 6 uL of ethidium bromide.
Ran for 1.5 hours at 100 volts.