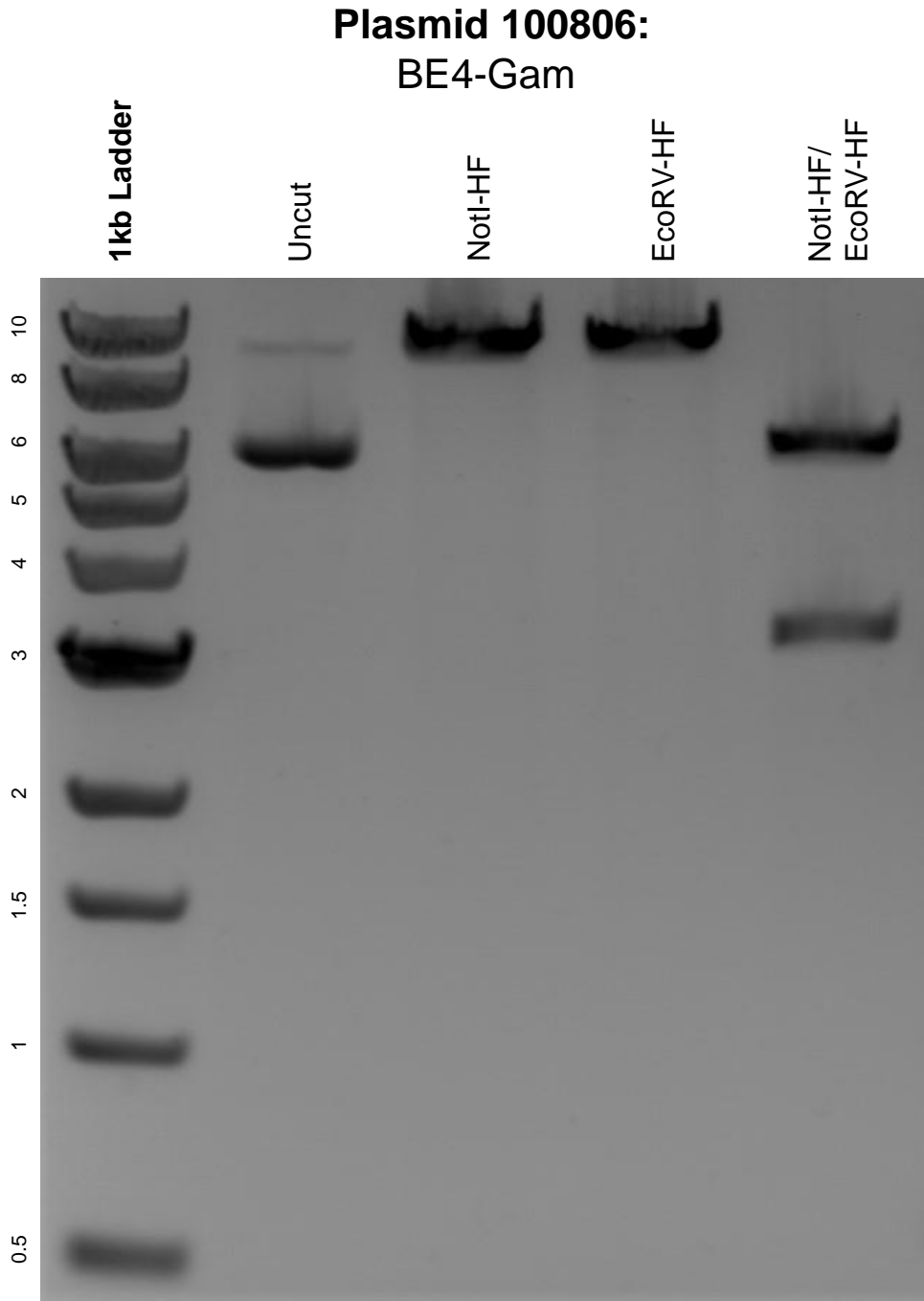


This gel depicts the NEB 1kb ladder and a digestion of the plasmid BE4-Gam with the following enzymes: NotI-HF and EcoRV-HF.



DNA digested with NotI-HF and EcoRV-HF single digests and NotI-HF/ EcoRV-HF double digest for **2 hours**.

Gel: 0.8% agarose stained with 6 uL of ethidium bromide.

Ran for 1.5 hours at 100 volts.