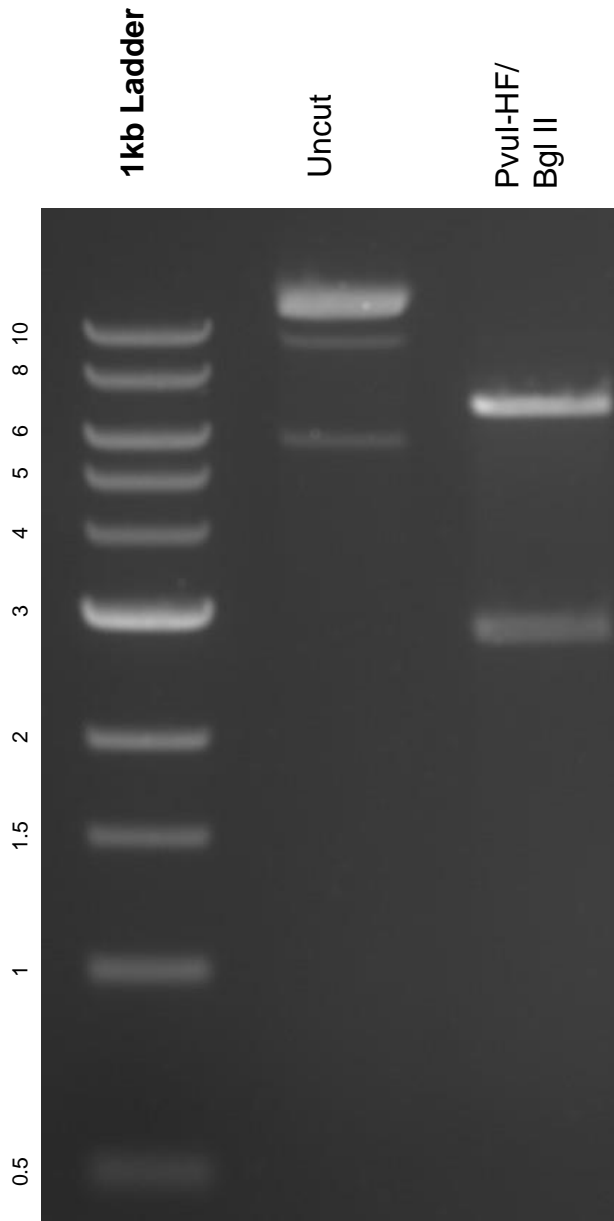


This gel depicts the NEB 1kb ladder and a digestion of the plasmid pDG458 with the following enzymes: PvuI-HF and Bgl II.

Plasmid 100900:
pDG458



DNA digested with PvuI-HF and Bgl II double digest for **2 hours**.
Gel: 0.8% agarose stained with 5 uL of ethidium bromide.
Ran for 1.5 hours at 100 volts.