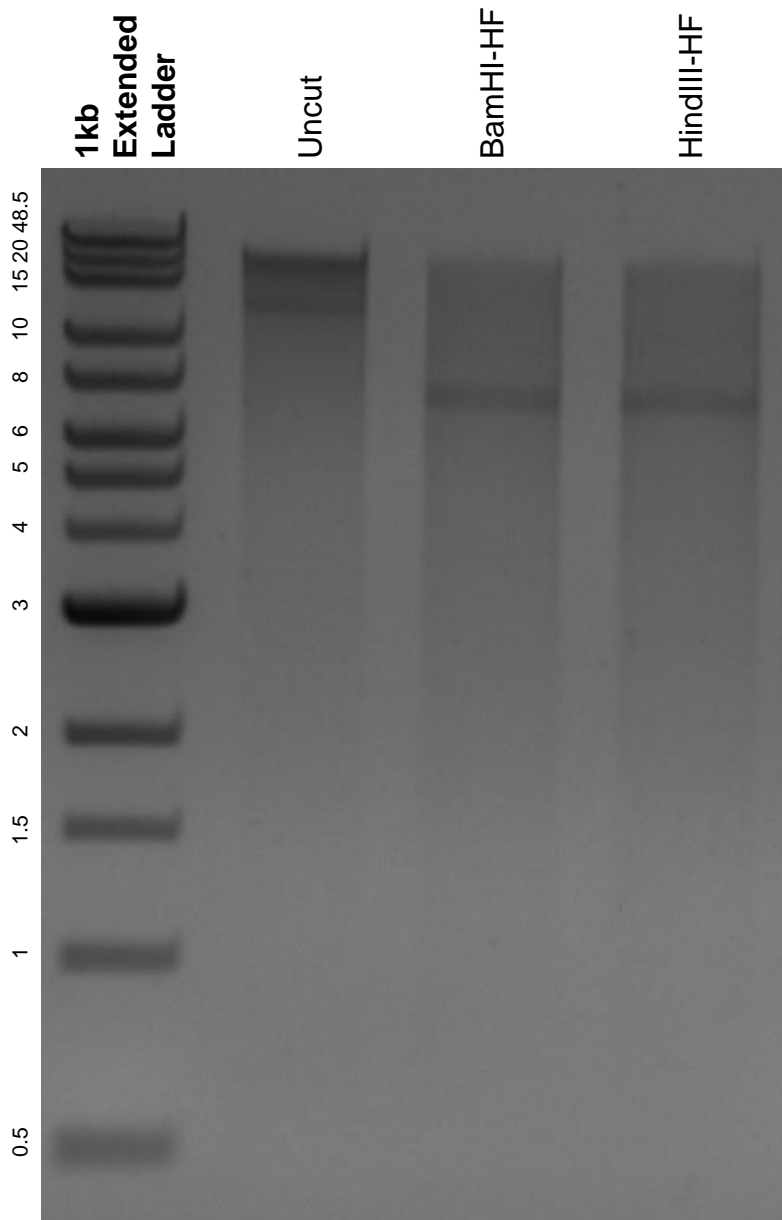


This gel depicts the NEB 1kb extended ladder and a digestion of the plasmid pcDNA3.1/Puro-CAG-ASAP2s with the following enzymes: BamHI-HF and HindIII-HF.

Plasmid 101274:
pcDNA3.1/Puro-CAG-ASAP2s



DNA digested with BamHI-HF and HindIII-HF single digests for **2 hours**.
Gel: 0.8% agarose stained with 6 uL of ethidium bromide.
Ran for 1.5 hours at 100 volts.