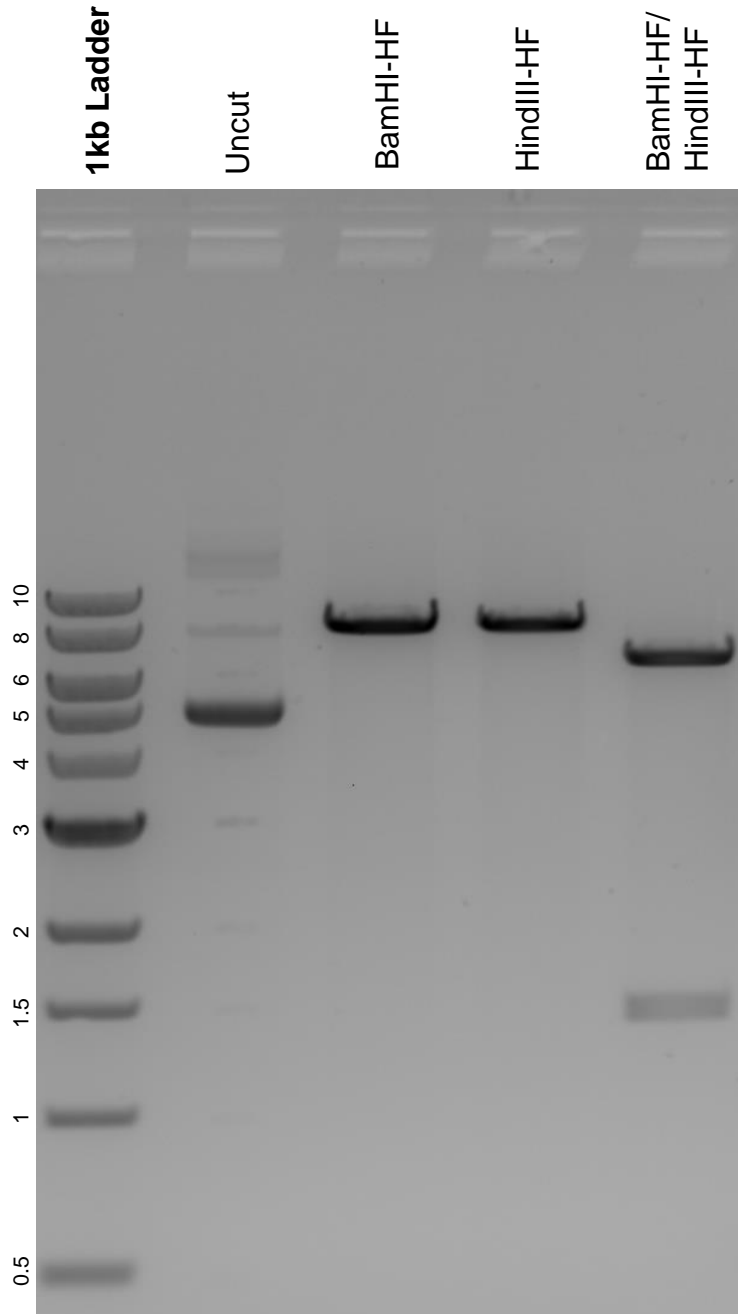


This gel depicts the NEB 1kb ladder and a digestion of the plasmid pAAV hSyn1 CaRhAC T2A tDimer with the following enzymes: BamHI-HF and HindIII-HF.

**Plasmid 101722:**  
pAAV hSyn1 CaRhAC T2A tDimer



DNA digested with BamHI-HF and HindIII-HF single digests and BamHI-HF/HindIII-HF double digest for **2 hours**.

Gel: 0.8% agarose stained with 5 uL of ethidium bromide.

Ran for 1.5 hours at 100 volts.