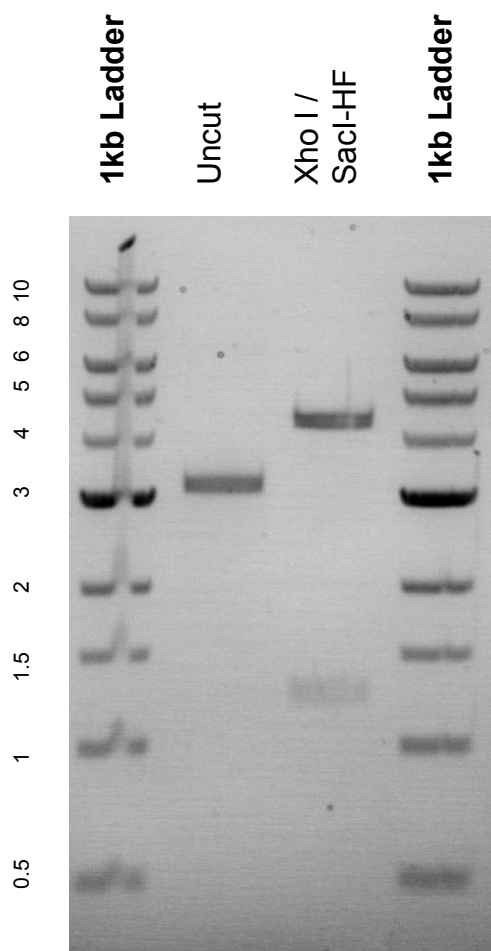


This gel depicts the NEB 1kb Ladder and a digestion of the plasmid **H14_MBP_SUMO-Cys-linker-BAF** with the following enzymes: **Xho I, SacI-HF**

Plasmid 101777:
H14_MBP_SUMO-Cys-linker-BAF



DNA digested with a Xho I / SacI-HF double digest for **2 hours**.
Gel: 0.8% agarose stained with 10 uL of SYBR Safe.
Ran for 1.25 hours at 100 volts.