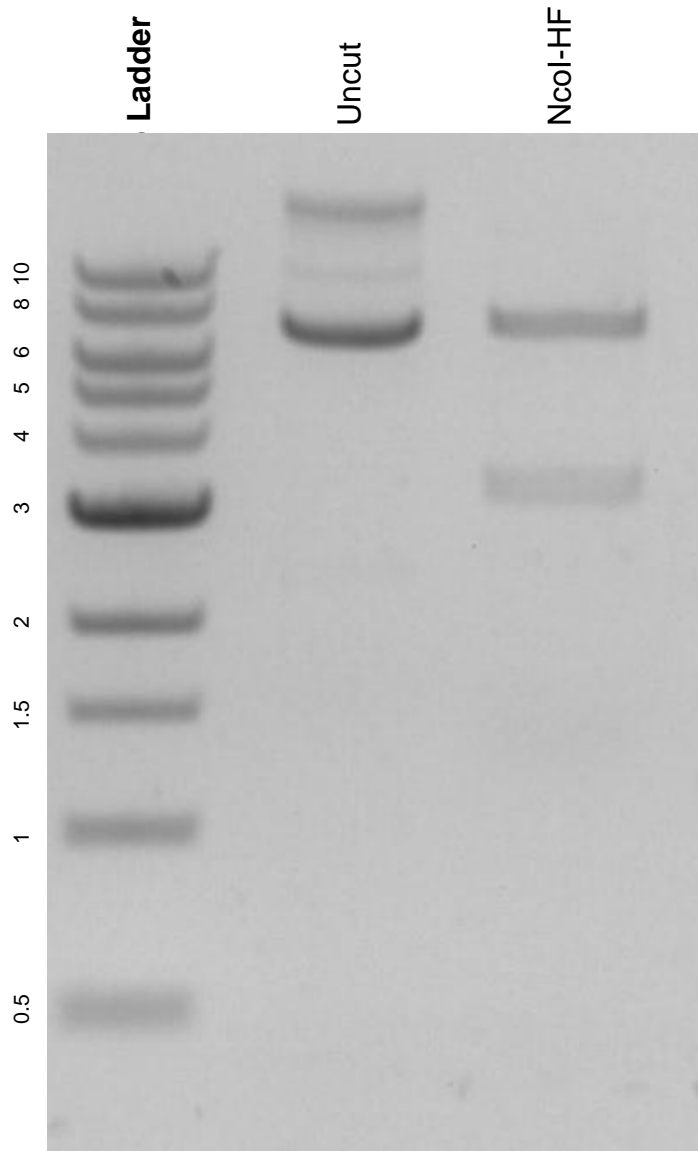


This gel depicts the NEB 1kb ladder and a digestion of the plasmid LSB-hsa-miR-630 with the following enzyme: NcoI-HF.

**Plasmid 103690:**  
LSB-hsa-miR-630



DNA digested with a NcoI-HF single digest for **2 hours**.  
Gel: 0.8% agarose stained with 5 uL of ethidium bromide.  
Ran for 1.5 hours at 100 volts.