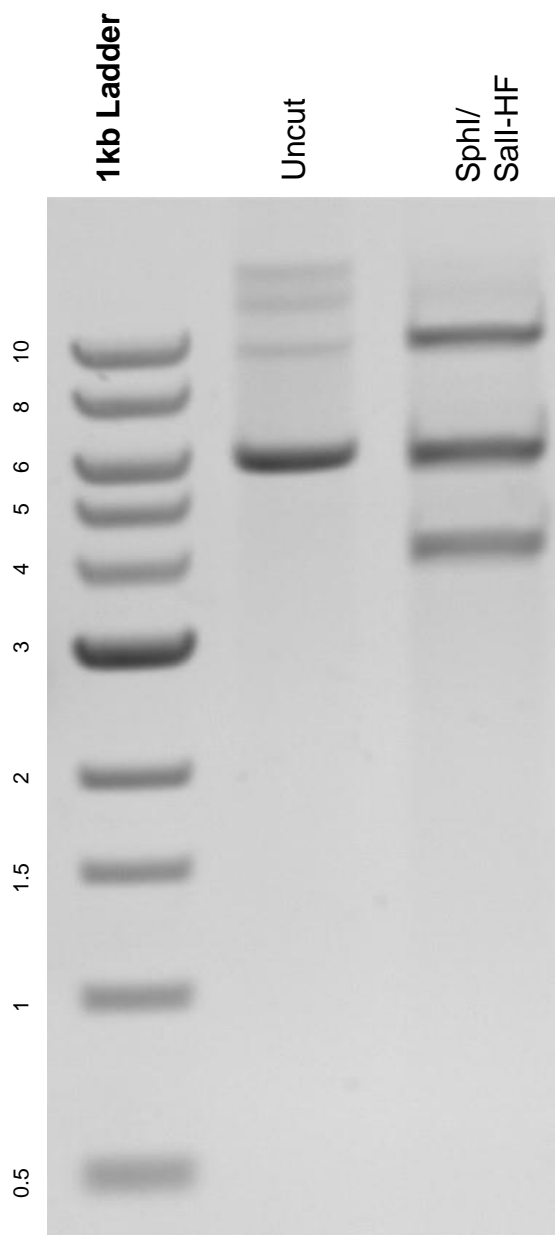


This gel depicts the NEB 1kb ladder and a digestion of the plasmid pUG-303 with the following enzymes: SphI and Sall-HF.

### Plasmid 104732: pUG-303



DNA digested with SphI/ Sall-HF double digest for **2 hours**.  
Gel: 0.8% agarose stained with 5 uL of ethidium bromide.  
Ran for 1.5 hours at 100 volts.