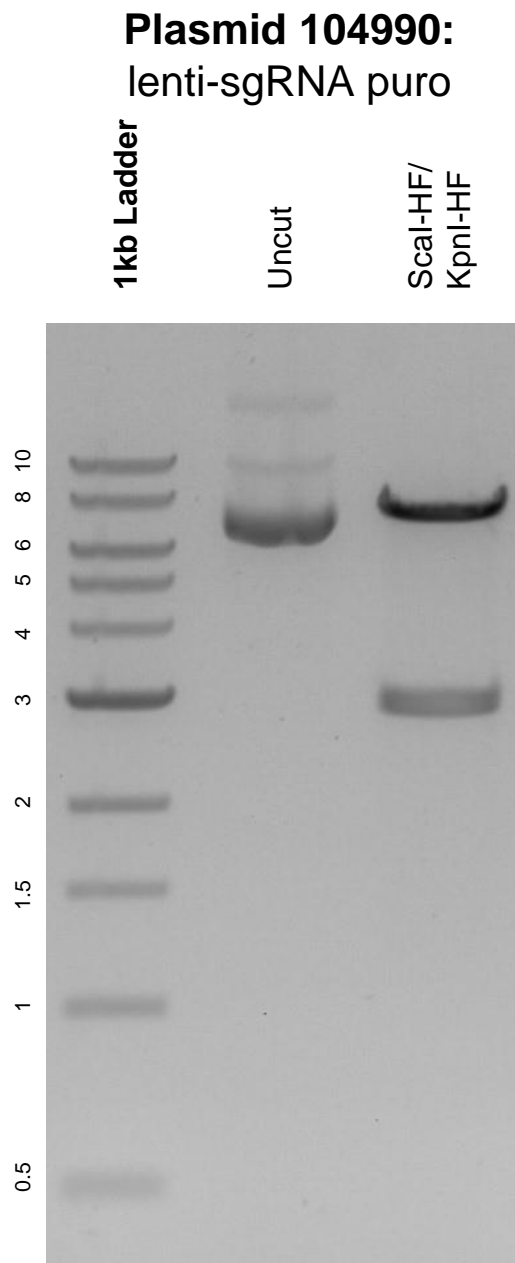


This gel depicts the NEB 1kb ladder and a digestion of the plasmid lenti-sgRNA puro with the following enzymes: Scal-HF and KpnI-HF.



DNA digested with Scal-HF and KpnI-HF double digest for **2 hours**.
Gel: 0.8% agarose stained with 5 uL of ethidium bromide.
Ran for 1.5 hours at 100 volts.