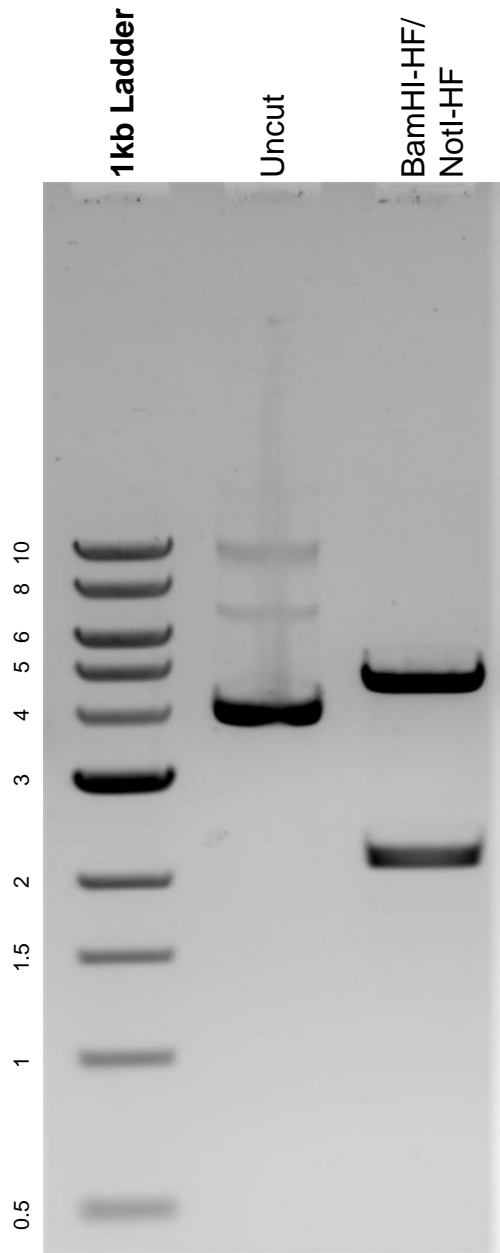


This gel depicts the NEB 1kb ladder and a digestion of the plasmid YIplac211-CHS3-msGFPx3 with the following enzymes: BamHI-HF and NotI-HF.

Plasmid 105257:
YIplac211-CHS3-msGFPx3



DNA digested with BamHI-HF/ NotI-HF double digest for **2 hours**.
Gel: 0.8% agarose stained with 6 uL of ethidium bromide.
Ran for 1.5 hours at 100 volts.