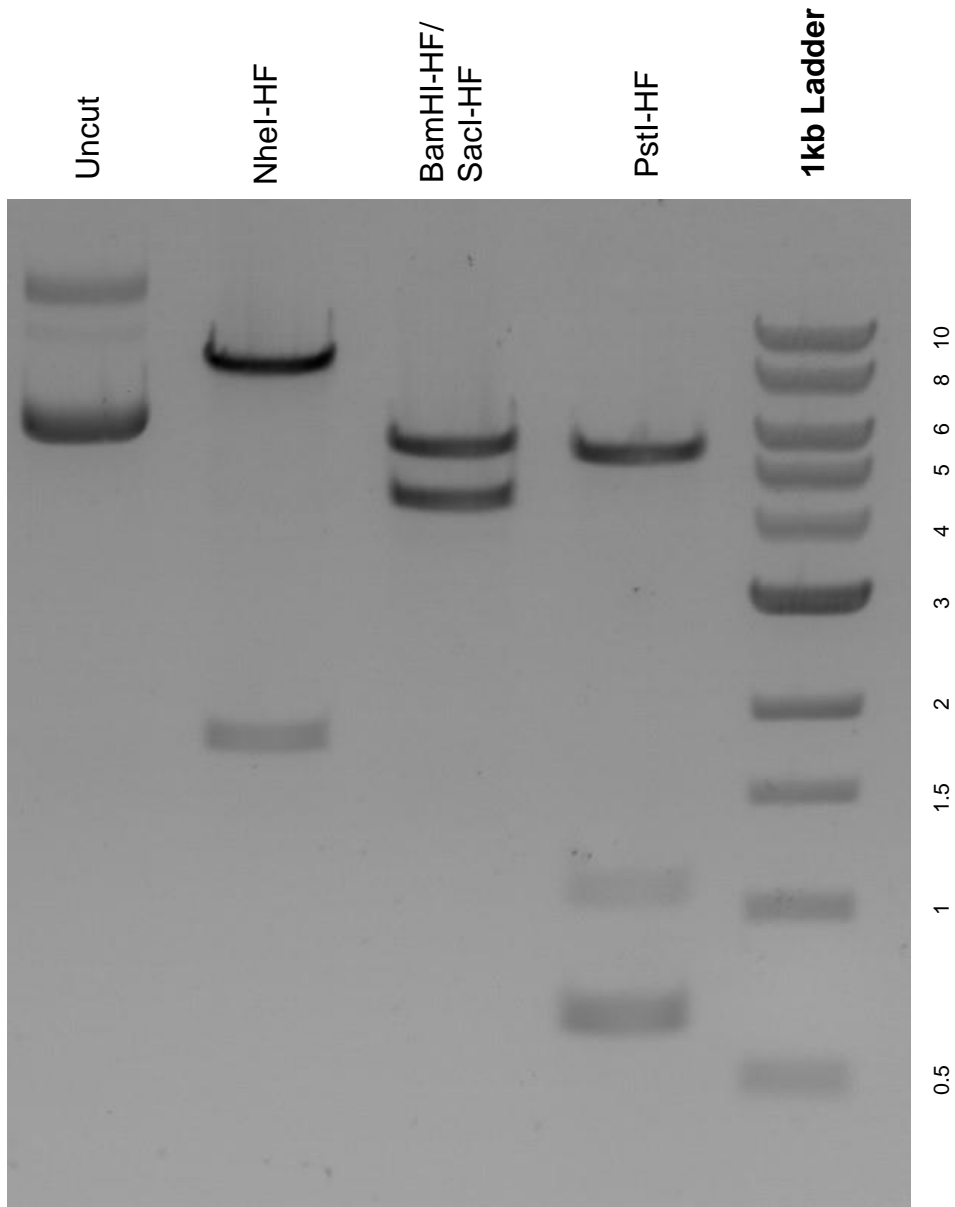


This gel depicts the NEB 1kb ladder and a digestion of the plasmid YIplac211-VPS8-mCherry2Bx6 with the following enzymes: NheI-HF, BamHI-HF, SacI-HF, and PstI-HF.

Plasmid 105273:
YIplac211-VPS8-mCherry2Bx6



DNA digested with NheI-HF and PstI-HF single digests and BamHI-HF/SacI-HF double digest for **2 hours**.

Gel: 0.8% agarose stained with 5 μ L of ethidium bromide.

Ran for 1.5 hours at 100 volts.