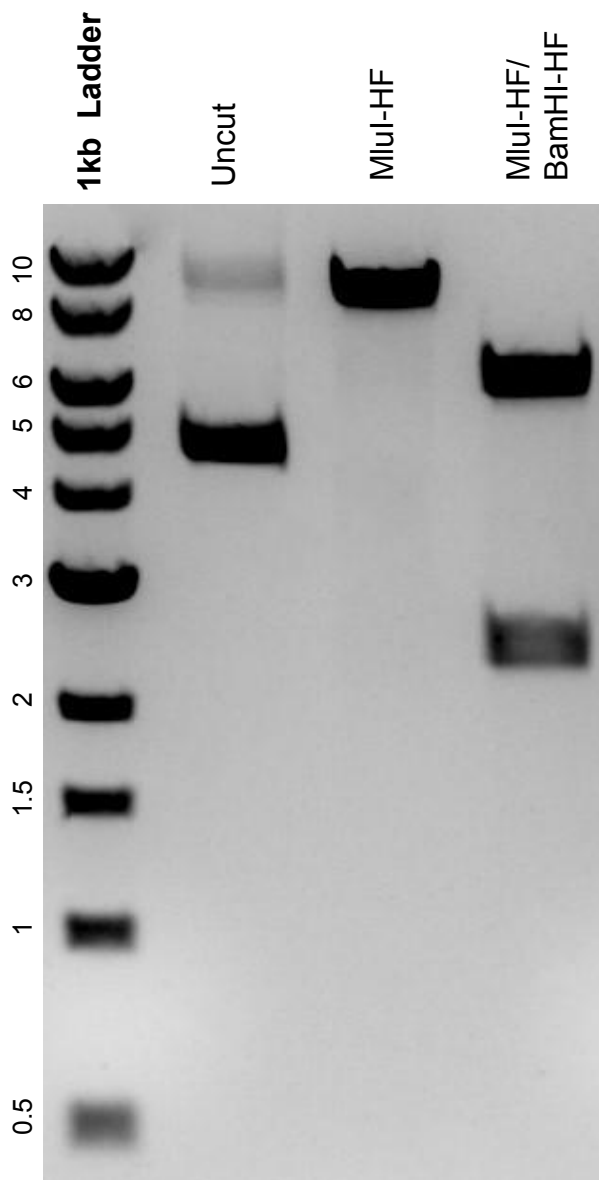


This gel depicts the NEB 1kb Ladder and a digestion of the plasmid Lenti-luciferase-P2A-Neo with the following enzymes: MluI-HF, BamHI-HF

**Plasmid 105621:**  
Lenti-luciferase-P2A-Neo



DNA digested with MluI-HF single digest and MluI-HF/BamHI-HF double digest for **2 hours**.

Gel: 0.8% agarose stained with SYBR Safe.

Ran for 1.25 hours at 100 volts.