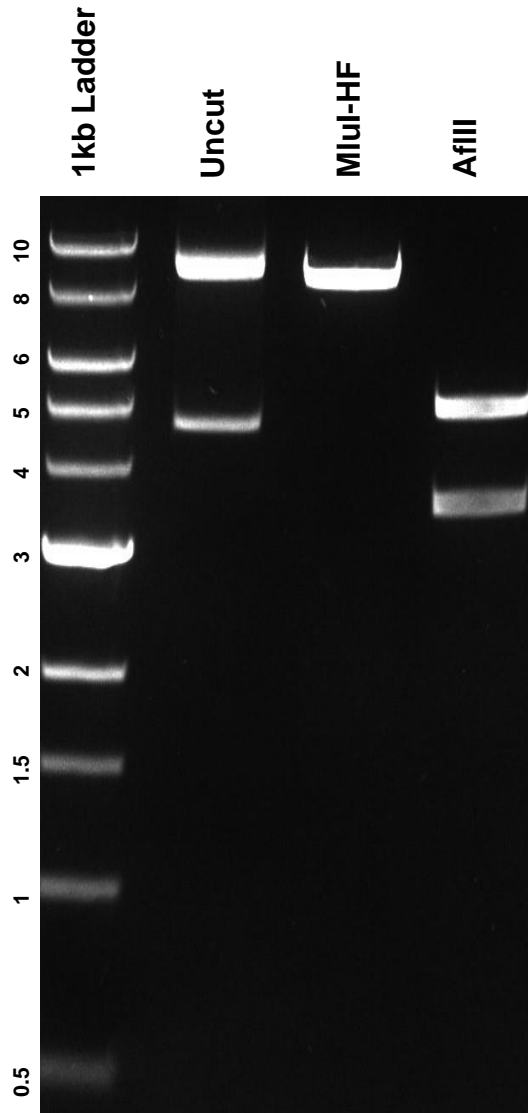


This gel depicts the NEB 1kb Ladder and a digestion of the plasmid **Lenti-luciferase-P2A-Neo** with the following enzyme(s): **MluI-HF** and **AflIII**

Plasmid 105621
Lenti-luciferase-P2A-Neo



DNA digested with **MluI-HF** and **AflIII** single digests for **1 hour**.
Gel: **0.8%** agarose stained with **6 uL** of SYBR Safe.
Ran for **1.15** hours at **100** volts.