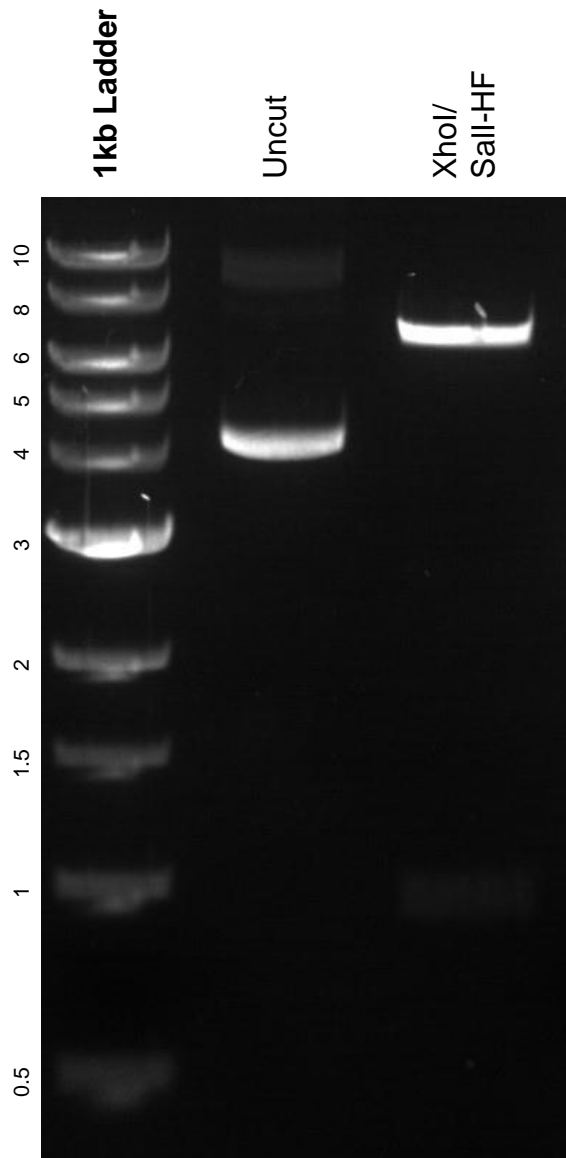


This gel depicts the NEB 1kb Ladder and a digestion of the plasmid pNEU-hMbPyIRS-4xU6M15 with the following enzymes: Xho I and Sall-HF

Plasmid 105830



DNA digested with XhoI/ Sall-HF double digest for 2 hours.
Gel: 0.8% agarose stained with 15 uL of SYBR Safe.
Ran for 1.5 hours at 100 volts.