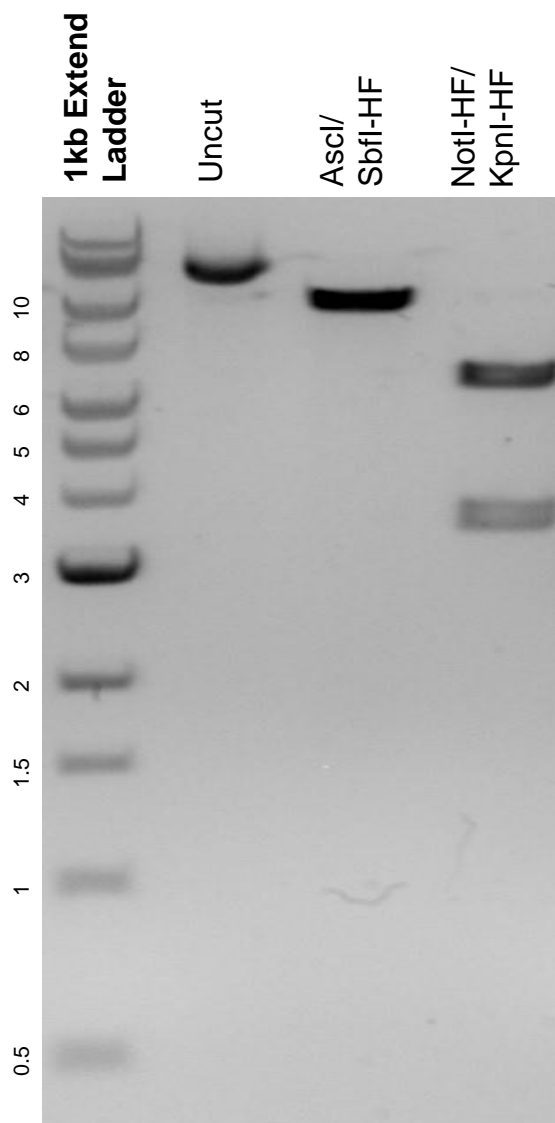


This gel depicts the NEB 1kb Extend Ladder and a digestion of the plasmid pUCM-AAVS1-TO-hNGN2 with the following enzymes: Ascl, SbfI-HF, NotI-HF, and KpnI-HF.

Plasmid 105840
pUCM-AAVS1-TO-hNGN2



DNA digested with Ascl /SbfI-HF and NotI-HF/ KpnI-HF double digests for 2 hours.
Gel: 0.8% agarose stained with 15 uL of SYBR Safe.
Ran for 1.5 hours at 100 volts.