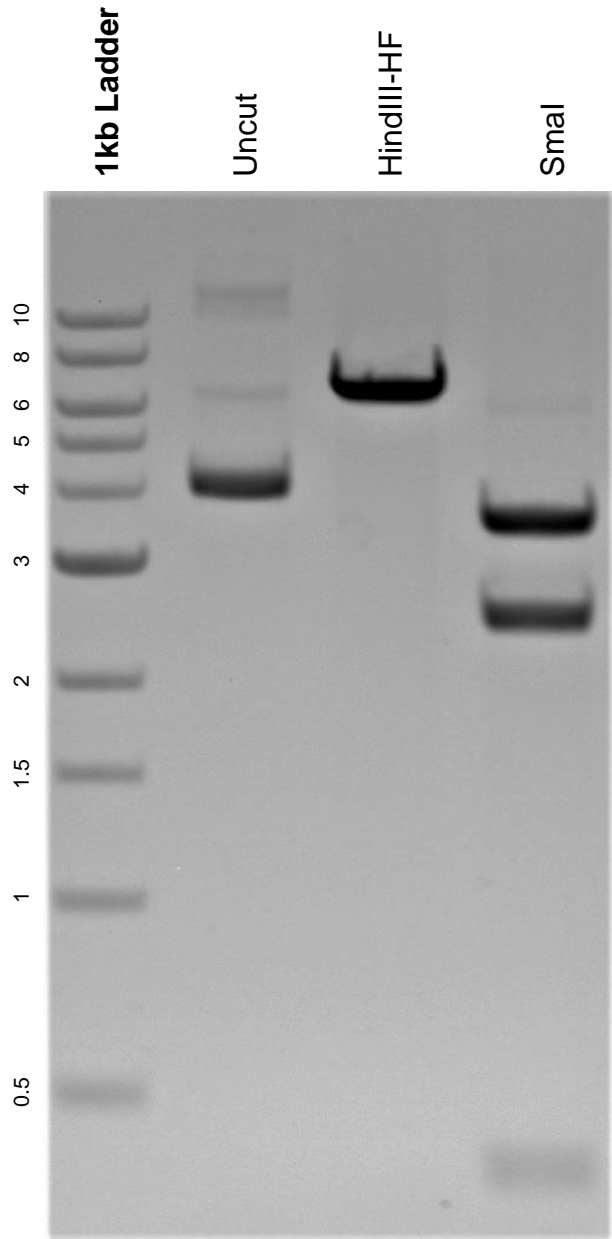


This gel depicts the NEB 1kb ladder and a digestion of the plasmid pAAV.hSynap-FLEX.SF-iGluSnFR.A184V with the following enzymes: HindIII-HF and SmaI.

**Plasmid 106181:**  
pAAV.hSynap-FLEX.SF-iGluSnFR.A184V



DNA digested with HindIII-HF and SmaI single digests for **2 hours**.  
Gel: 0.8% agarose stained with 5 uL of ethidium bromide.  
Ran for 1.5 hours at 100 volts.