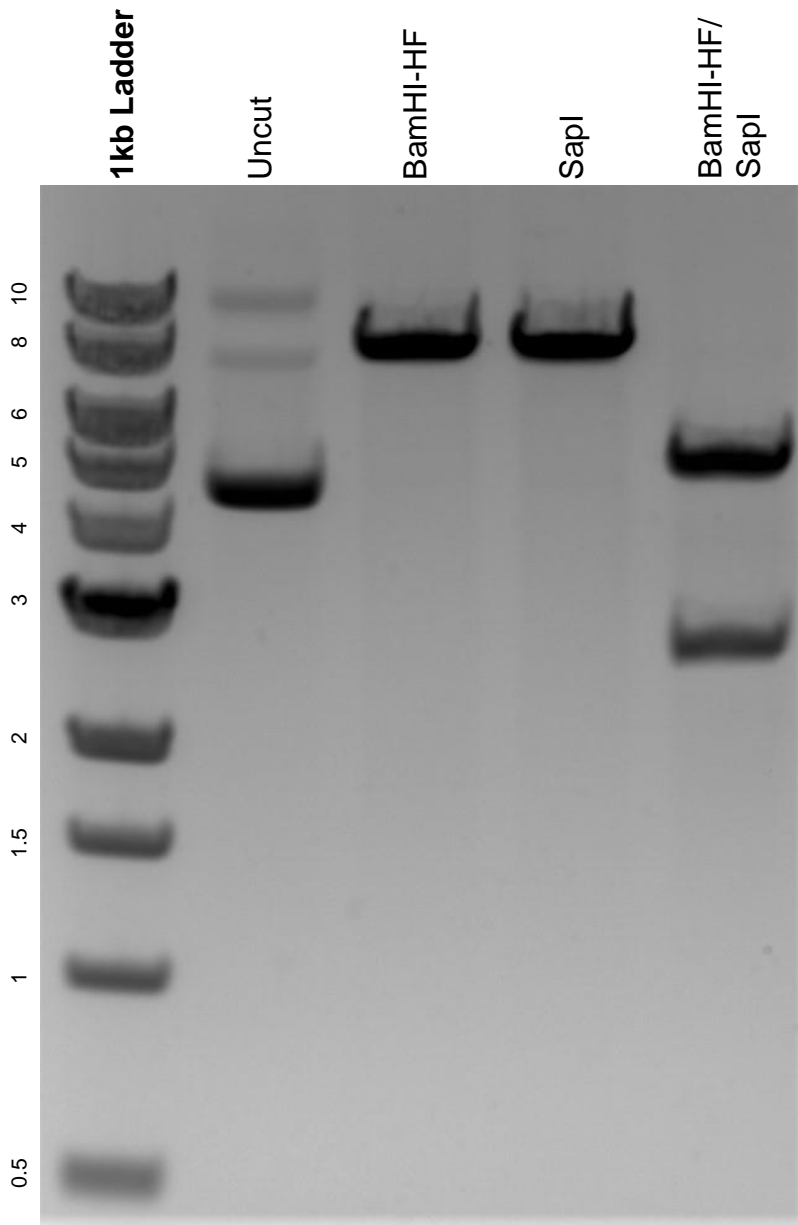


This gel depicts the NEB 1kb ladder and a digestion of the plasmid pME-Trpa1b-2A-mCherry with the following enzymes: BamHI-HF and SapI.

Plasmid 106291:
pME-Trpa1b-2A-mCherry



DNA digested with BamHI-HF and SapI single digests and BamHI-HF/ SapI double digest for **2 hours**.

Gel: 0.8% agarose stained with 5 uL of ethidium bromide.

Ran for 1.5 hours at 100 volts.