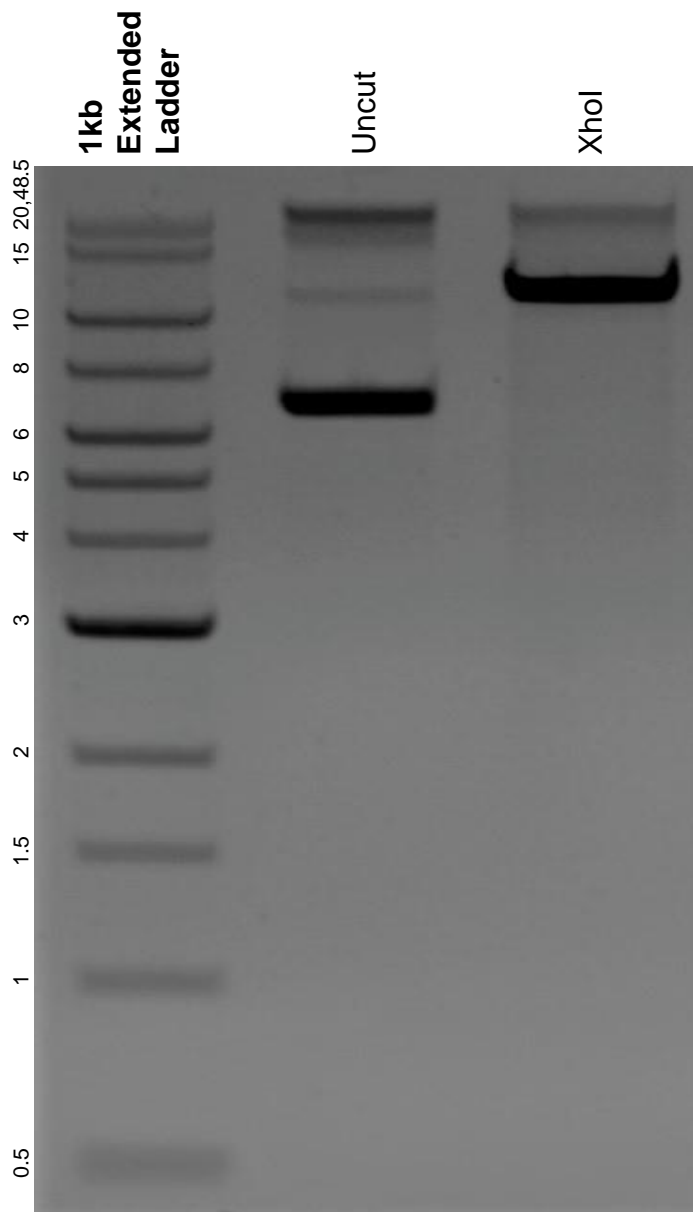


This gel depicts the NEB 1kb extended ladder and a digestion of the plasmid p2T-CAG-SpCas9-BlastR with the following enzymes: XhoI.

Plasmid 107190:
p2T-CAG-SpCas9-BlastR



DNA digested with XhoI single digest for **2 hours**.
Gel: 0.8% agarose stained with 6 uL of ethidium bromide.
Ran for 1.5 hours at 100 volts.