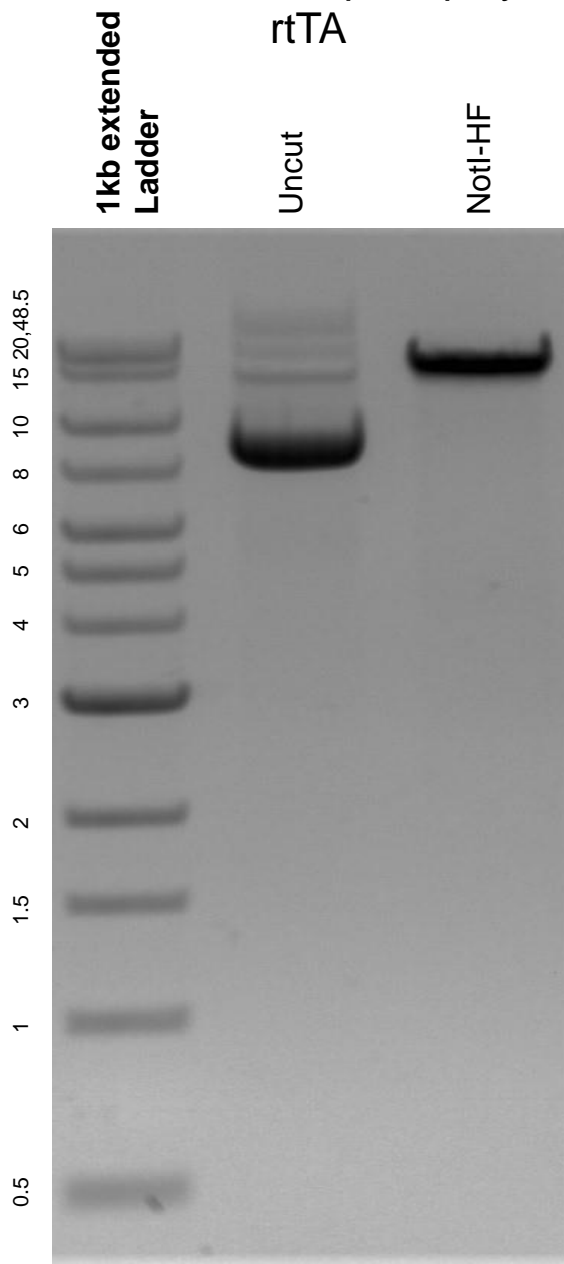


This gel depicts the NEB 1kb extended ladder and a digestion of the plasmid pAAVS1-TRE-Cas9- puro-polyA-CAG-rtTA with the following enzymes: NotI-HF.

Plasmid 107270:
pAAVS1-TRE-Cas9- puro-polyA-CAG-
rtTA



DNA digested with NotI-HF single digest for **2 hours**.
Gel: 0.8% agarose stained with 5 uL of ethidium bromide.
Ran for 1.5 hours at 100 volts.