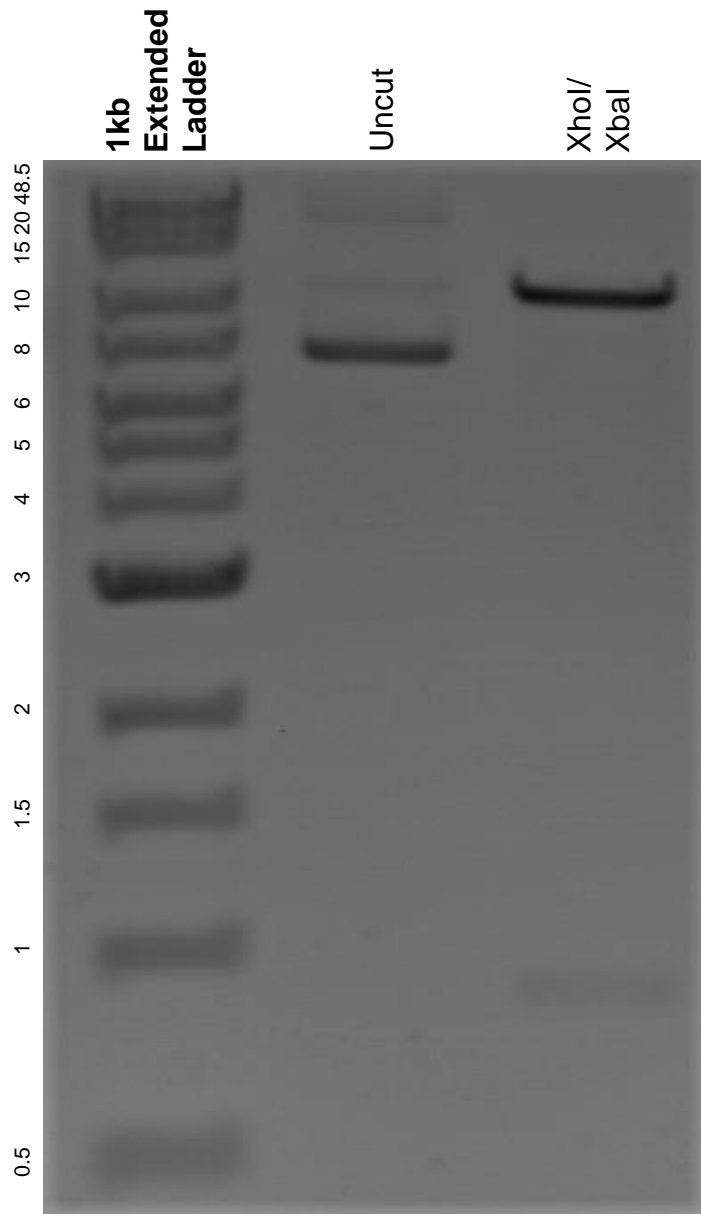


This gel depicts the NEB 1kb extended ladder and a digestion of the plasmid plenti-UBC-Myc-gate-pGK-HYG with the following enzymes: XhoI and XbaI.

Plasmid 107395:
plenti-UBC-Myc-gate-pGK-HYG



DNA digested with XhoI/ XbaI double digest for **2 hours**.
Gel: 0.8% agarose stained with 6 uL of ethidium bromide.
Ran for 1.5 hours at 100 volts.