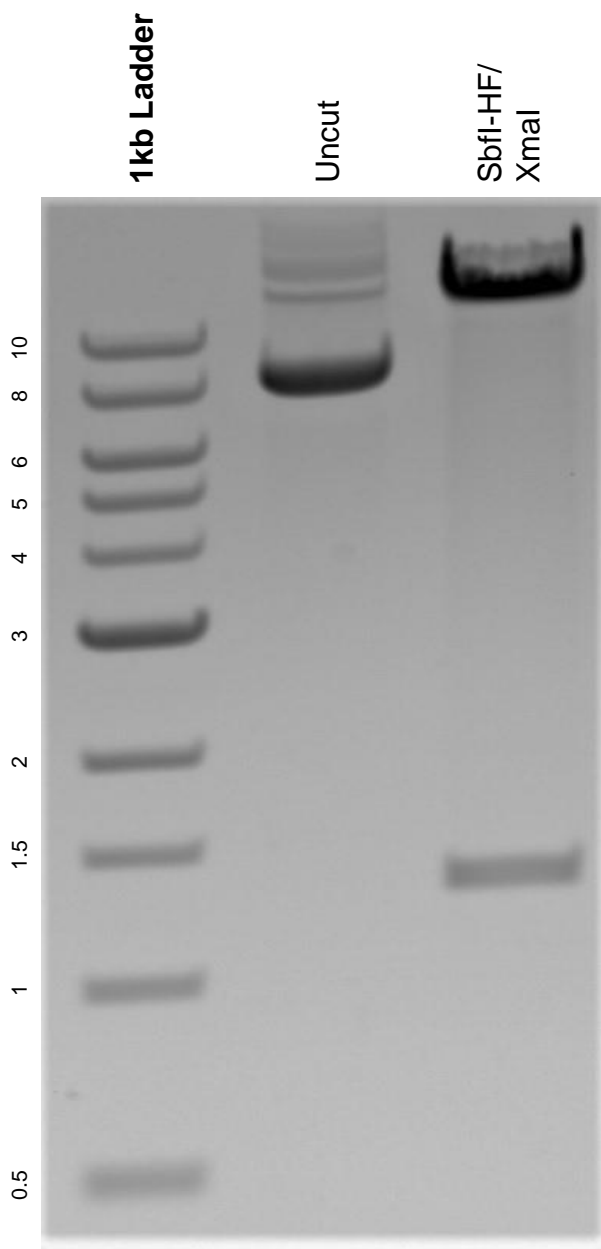


This gel depicts the NEB 1kb ladder and a digestion of the plasmid pCRISPRa_VPR_yl with the following enzymes: SbfI-HF/ XmaI

Plasmid 107677:
pCRISPRa_VPR_yl



DNA digested with SbfI-HF/ XmaI double digest for **2 hours**.
Gel: 0.8% agarose stained with 5 uL of ethidium bromide.
Ran for 1.5 hours at 100 volts.