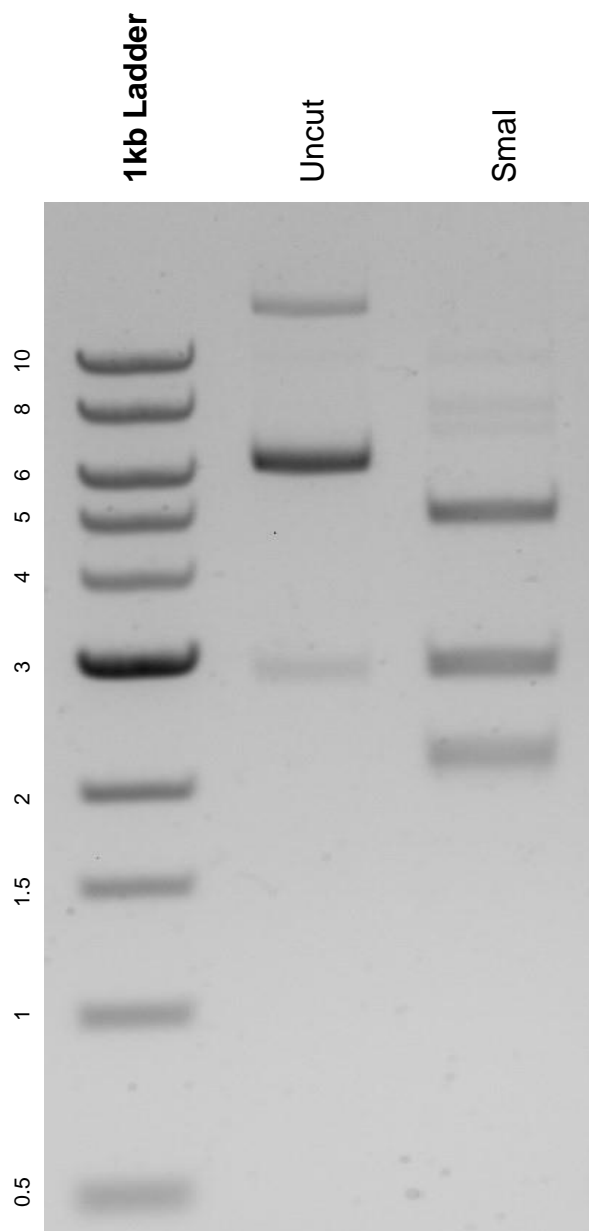


This gel depicts the NEB 1kb ladder and a digestion of the plasmid pAAV-hSyn-Htt171-66Q-myc-WPRE with the following enzymes: SmaI.

Plasmid 107934:
pAAV-hSyn-Htt171-66Q-myc-WPRE



DNA digested with SmaI single digests for **2 hours**.
Gel: 0.8% agarose stained with 5 uL of ethidium bromide.
Ran for 1.5 hours at 100 volts.