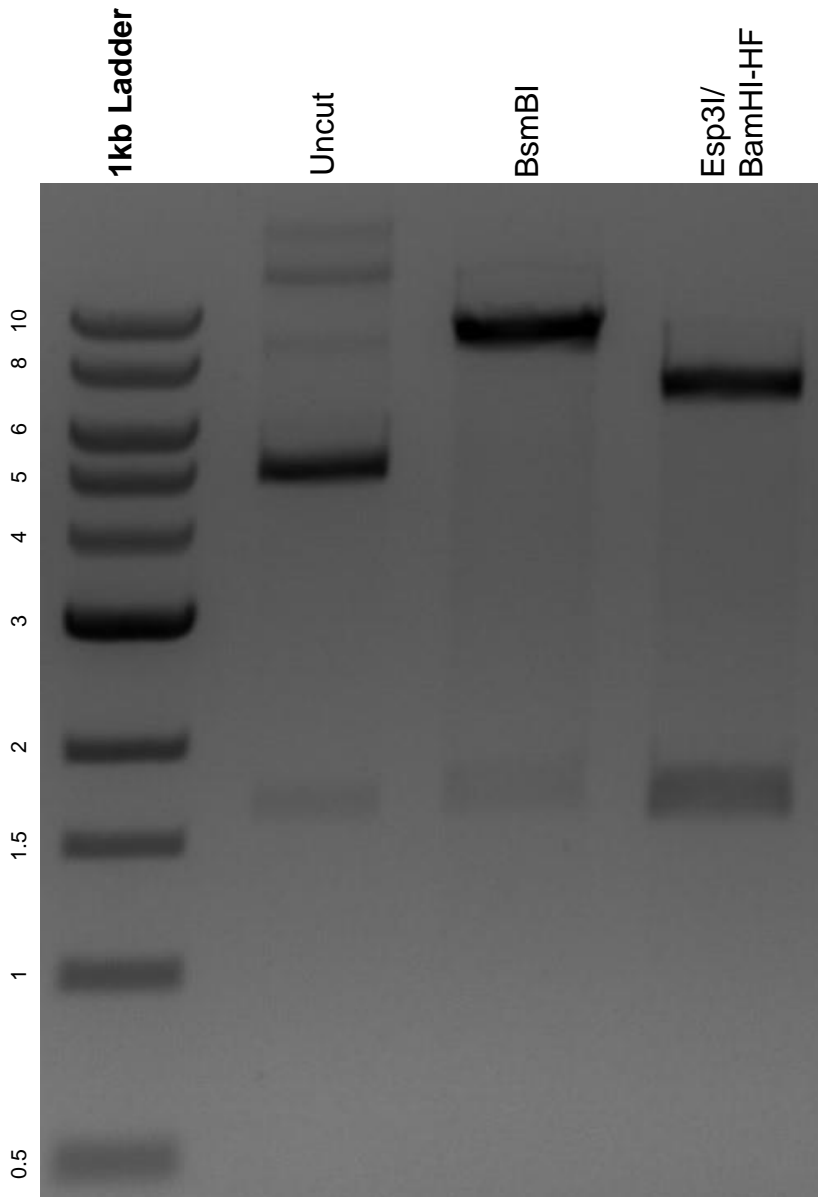


This gel depicts the NEB 1kb ladder and a digestion of the plasmid VEGFR2-YFP with the following enzymes: BsmBI, Esp3I, and BamHI-HF.

### Plasmid 108853: VEGFR2-YFP



DNA digested with BsmBI single digest and Esp3I/ BamHI-HF double digest for **2 hours**.

Gel: 0.8% agarose stained with 6 uL of ethidium bromide.

Ran for 1.5 hours at 100 volts.