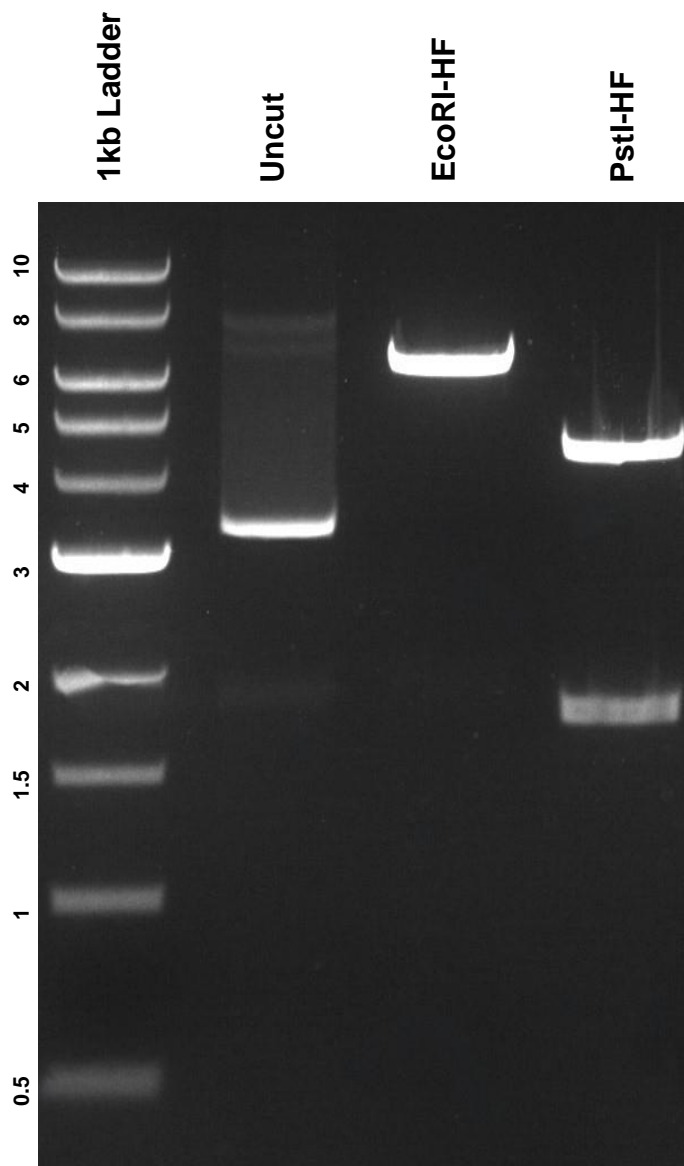


This gel depicts the NEB 1kb Ladder and a digestion of the plasmid **pcDNA3 Rod Opsin** with the following enzyme(s): **EcoRI-HF** and **PstI-HF**

Plasmid 109361
pcDNA3 Rod Opsin



DNA digested with **EcoRI-HF** and **PstI-HF** single digests for **1 hours**.
Gel: **0.8%** agarose stained with **6 uL** of SYBR Safe.
Ran for **1.5** hours at **100** volts.