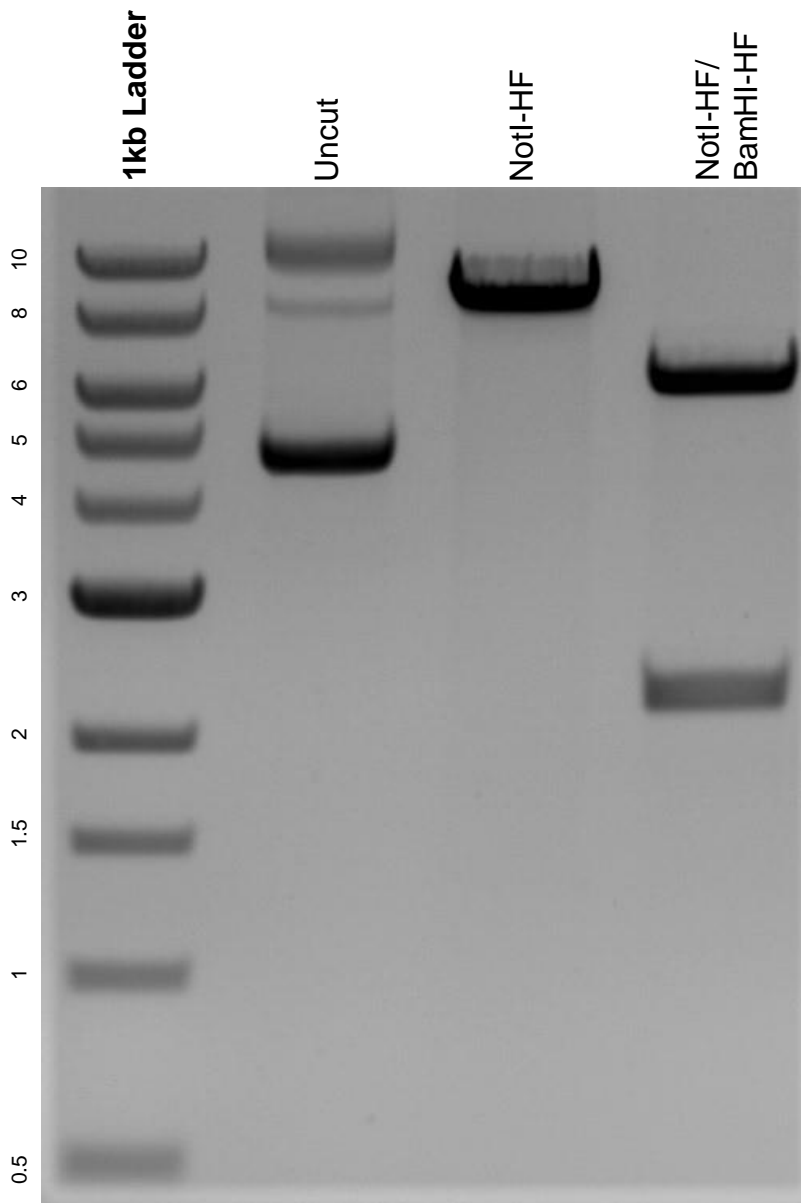


This gel depicts the NEB 1kb ladder and a digestion of the plasmid Plenti-CMV-MCS-RFP-SV-puro with the following enzymes: NotI-HF and BamHI-HF.

Plasmid 109377:
Plenti-CMV-MCS-RFP-SV-puro



DNA digested with NotI-HF single digest and NotI-HF/ BamHI-HF double digest for **2 hours**.

Gel: 0.8% agarose stained with 6 uL of ethidium bromide.

Ran for 1.5 hours at 100 volts.