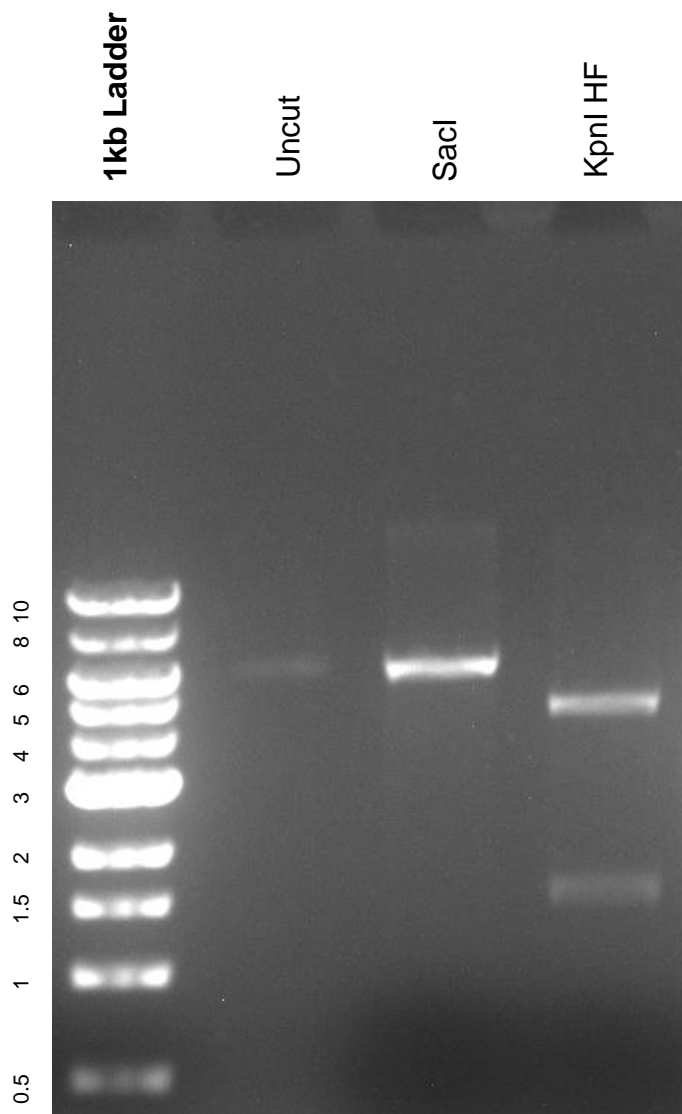


This gel depicts the NEB 1kb ladder and a digestion of the plasmid pCVD442 with the following enzymes: SacI and KpnI

**Plasmid 11074:
pCVD442**



DNA digested with SacI, KpnI single digests for **2 hours**

Gel: .8% TAE stained with 150 ml 1X TAE and 3uL of ethidium bromide

Ran for 1 hour at 100 volts