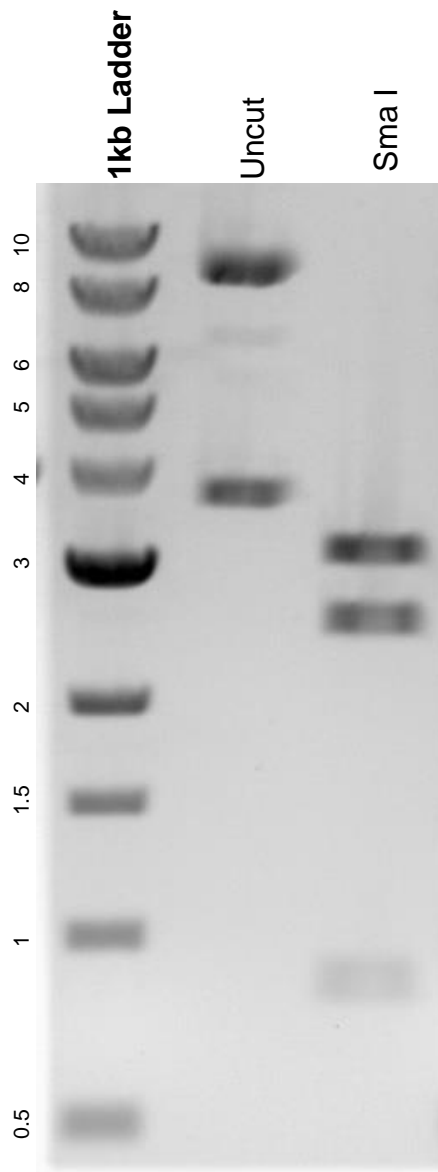


This gel depicts the NEB 1kb ladder and a digestion of the plasmid pBabe bleo human PPAR gamma 2 with the following enzymes: Sma I.

**Plasmid 11439:**  
pBabe bleo human PPAR gamma 2



DNA digested with Sma I single digest for **2 hours**.  
Gel: 0.8% agarose stained with 6 uL of ethidium bromide.  
Ran for 1.5 hours at 100 volts.