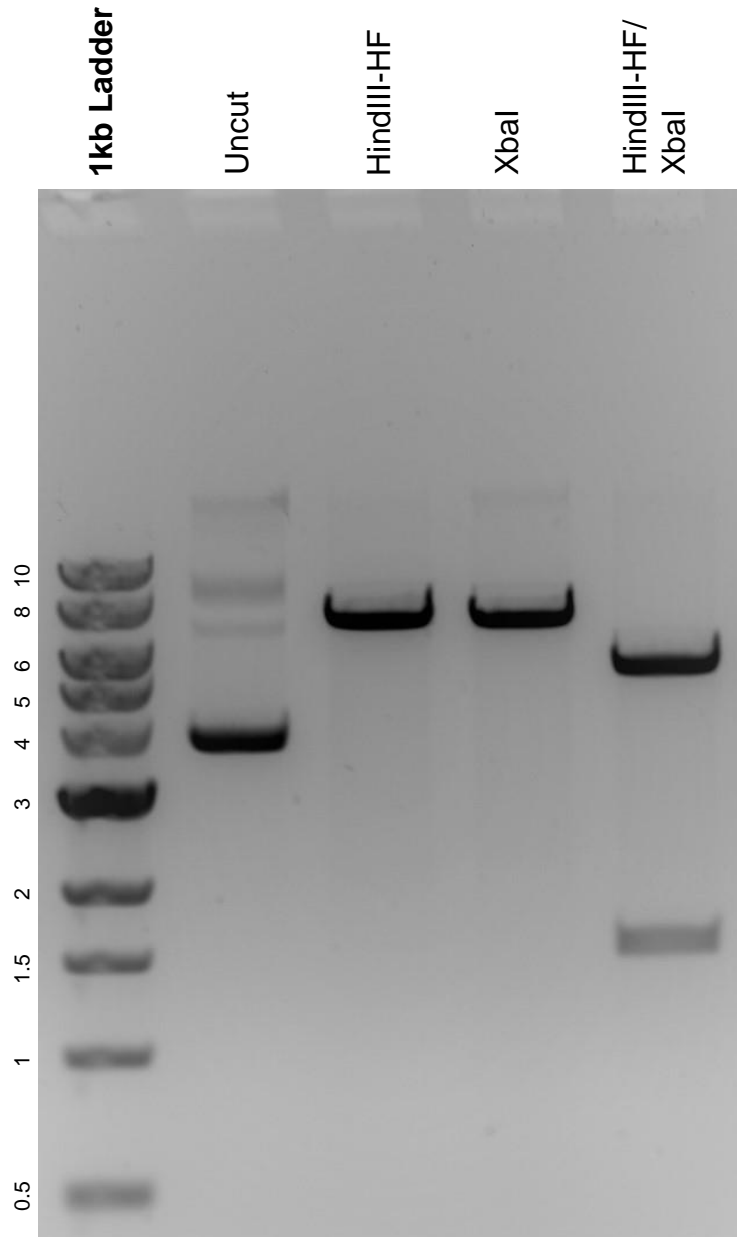


This gel depicts the NEB 1kb ladder and a digestion of the plasmid pcDNA3-HA-ADH with the following enzymes: HindIII-HF and XbaI.

Plasmid 11610:
pcDNA3-HA-ADH



DNA digested with HindIII-HF and XbaI single digests and HindIII/ XbaI double digest for **2 hours**.

Gel: 0.8% agarose stained with 6 uL of ethidium bromide.

Ran for 1.25 hours at 100 volts.