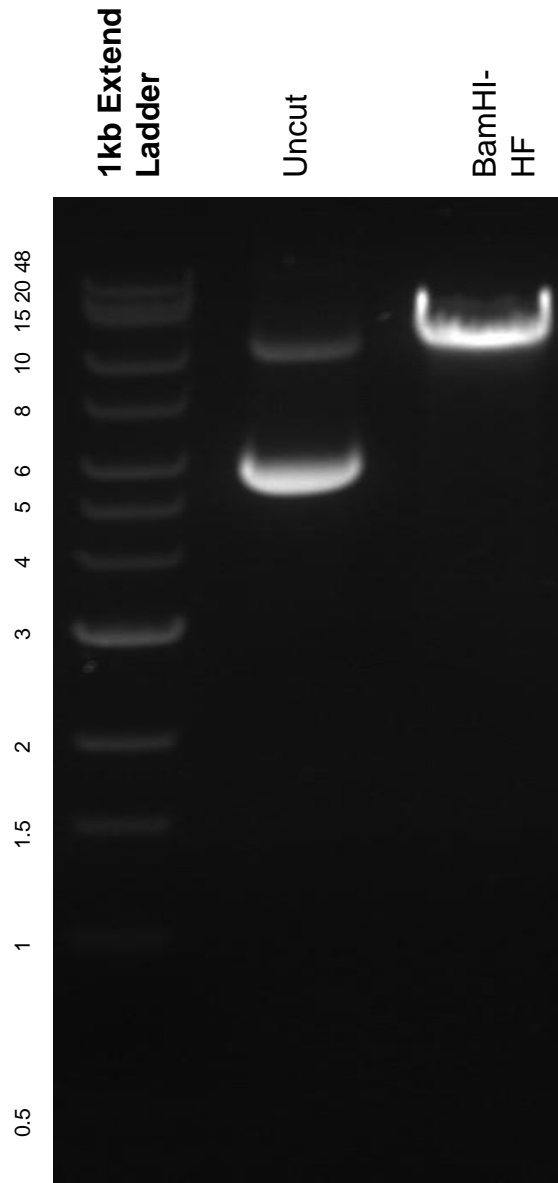


This gel depicts the NEB 1kb Extend Ladder and a digestion of the plasmid FUW mCherry-GFP-LC3 with the following enzyme: BamHI-HF

### Plasmid 110060 FUW mCherry-GFP-LC3



DNA digested with BamHI-HF single digest for **2 hours**.  
Gel: 0.8% agarose stained with 5 uL of ethidium bromide.  
Ran for 1.5 hours at 100 volts.