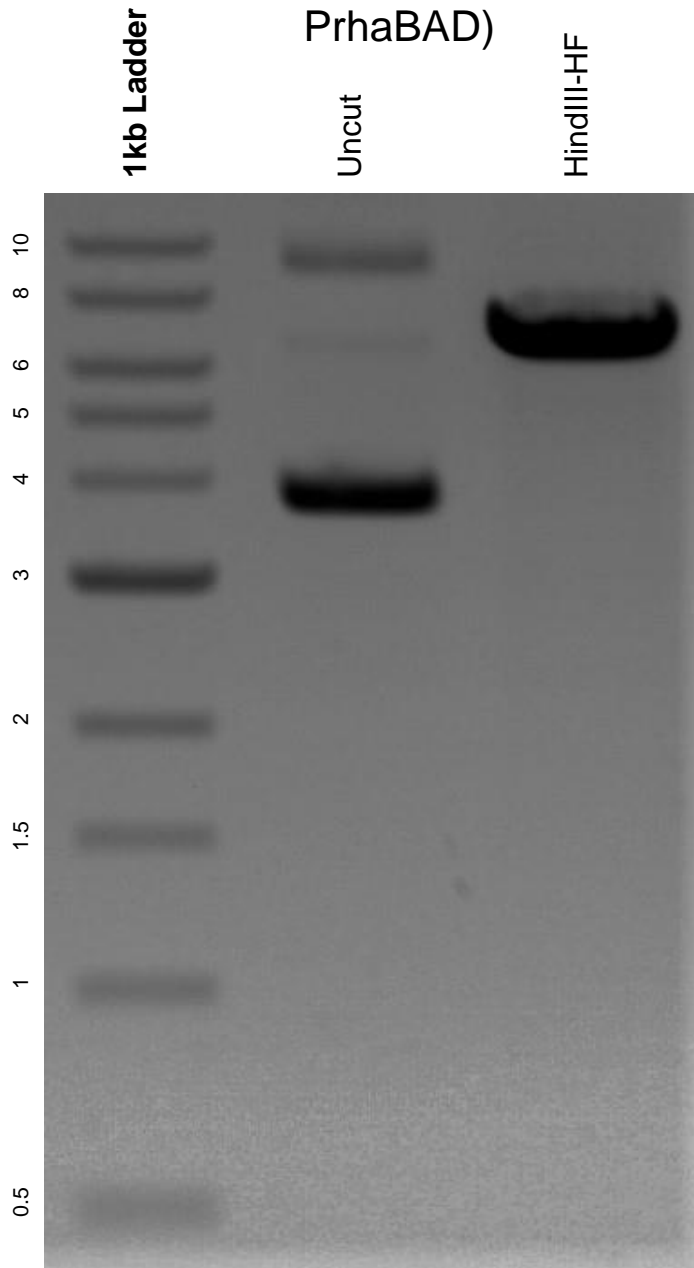


This gel depicts the NEB 1kb ladder and a digestion of the plasmid pJM220 (pUC18T-miniTn7T-gm-rhaSR-PrhaBAD) with the following enzymes: HindIII-HF.

Plasmid 110559:
pJM220 (pUC18T-miniTn7T-gm-rhaSR-PrhaBAD)



DNA digested with HindIII-HF single digest for **2 hours**.
Gel: 0.8% agarose stained with 6 uL of ethidium bromide.
Ran for 1.5 hours at 100 volts.