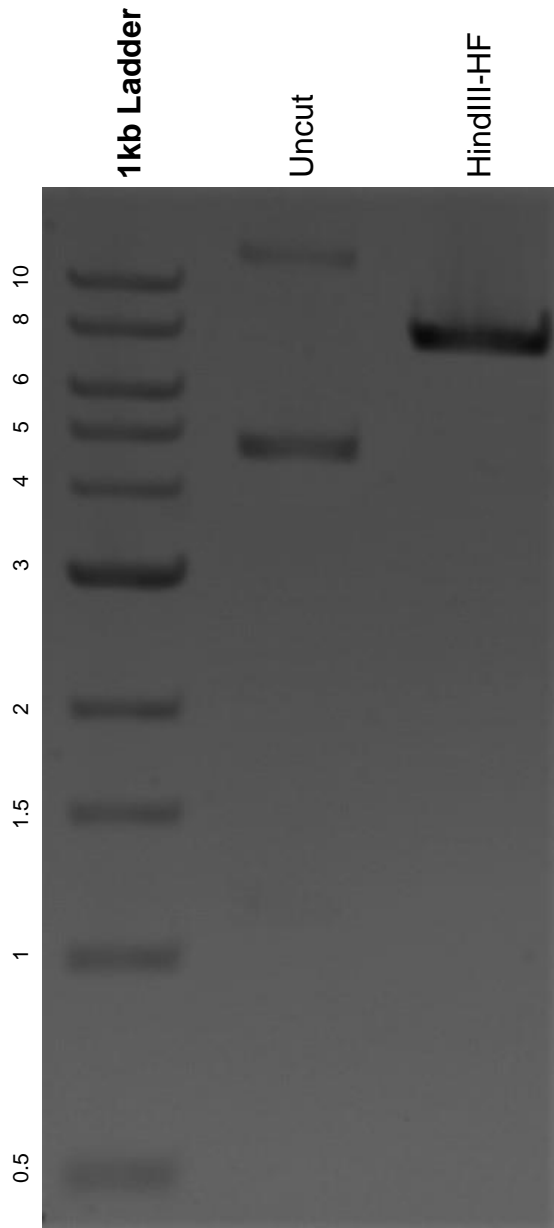


This gel depicts the NEB 1kb ladder and a digestion of the plasmid pJM253 (miniCTX1-rhaSR-PrhaBAD) with the following enzymes: HindIII-HF.

**Plasmid 110571:**  
pJM253 (miniCTX1-rhaSR-PrhaBAD)



DNA digested with HindIII-HF single digest for **2 hours**.  
Gel: 0.8% agarose stained with 6 uL of ethidium bromide.  
Ran for 1.5 hours at 100 volts.