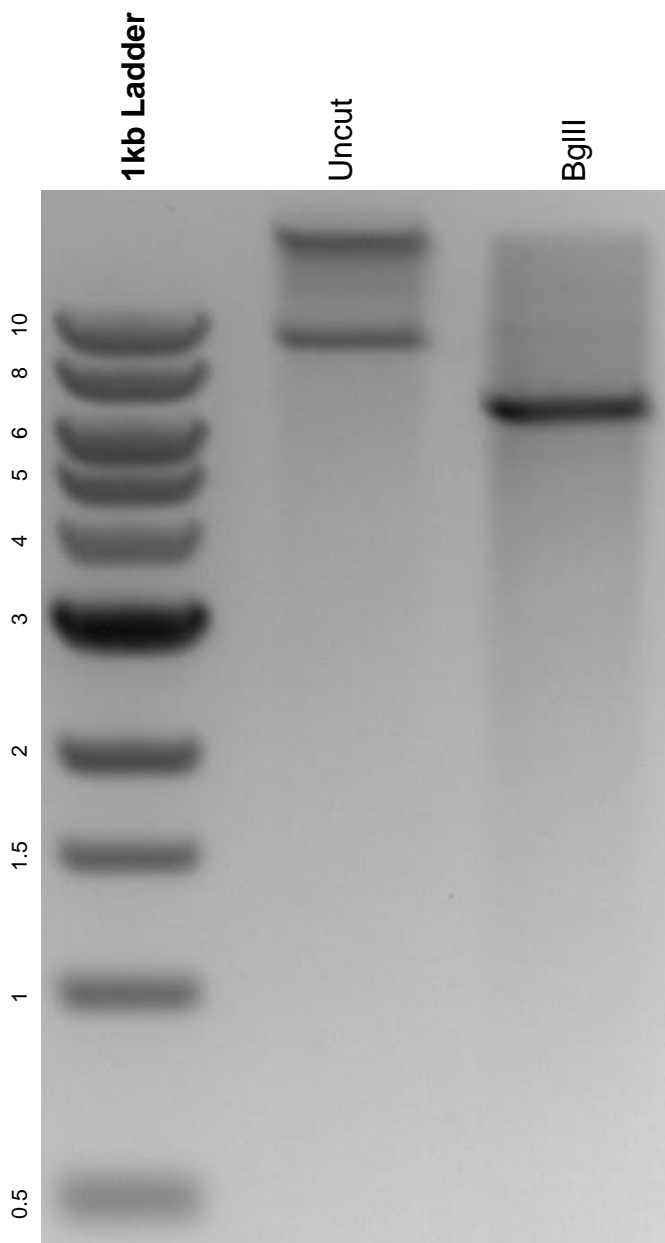


This gel depicts the NEB 1kb ladder and a digestion of the plasmid pET15TV-L-SaNAS with the following enzymes: BglII.

Plasmid 110803:
pET15TV-L-SaNAS



DNA digested with BglII single digest for **2 hours**.
Gel: 0.8% agarose stained with 6 uL of ethidium bromide.
Ran for 1.5 hours at 100 volts.