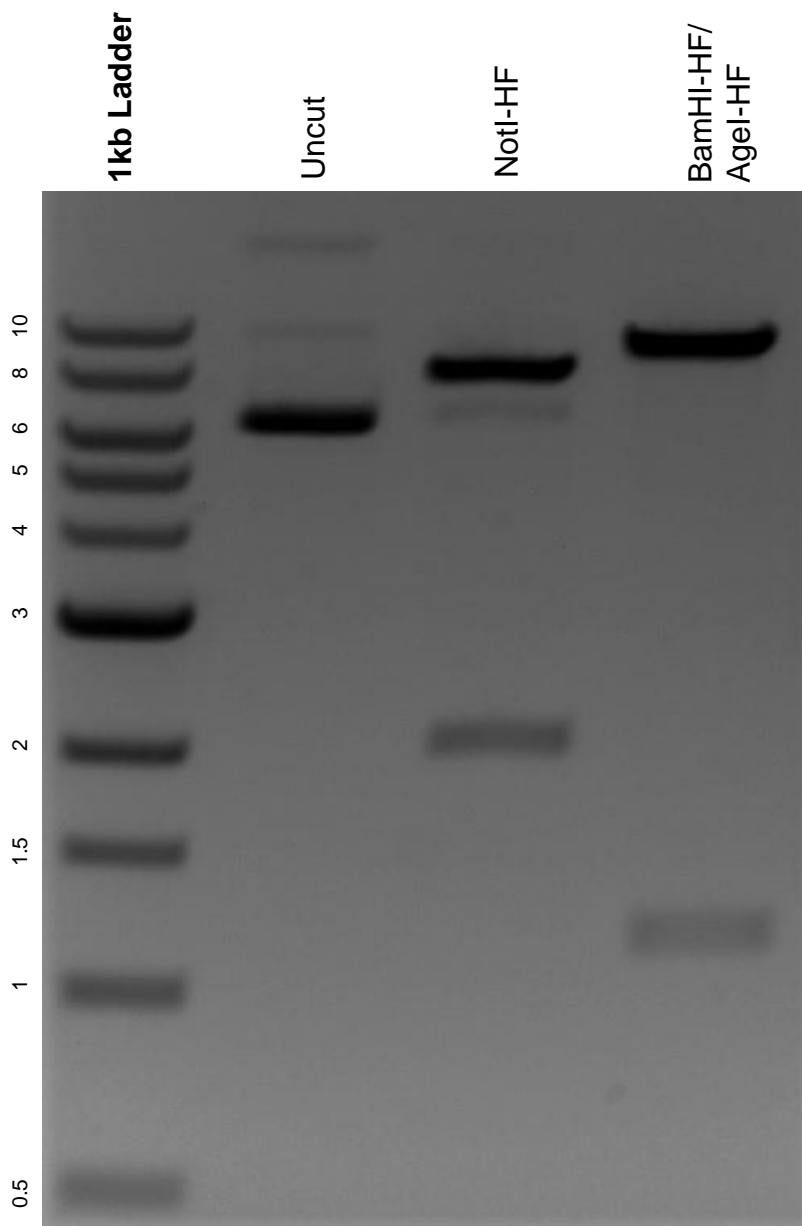


This gel depicts the NEB 1kb ladder and a digestion of the plasmid LT3REVIR with the following enzymes: NotI-HF, BamHI-HF, Agel-HF.

Plasmid 111176:
LT3REVIR



DNA digested with NotI-HF single digest and BamHI-HF/ Agel-HF double digest for **2 hours**.

Gel: 0.8% agarose stained with 6 uL of ethidium bromide.

Ran for 1.5 hours at 100 volts.