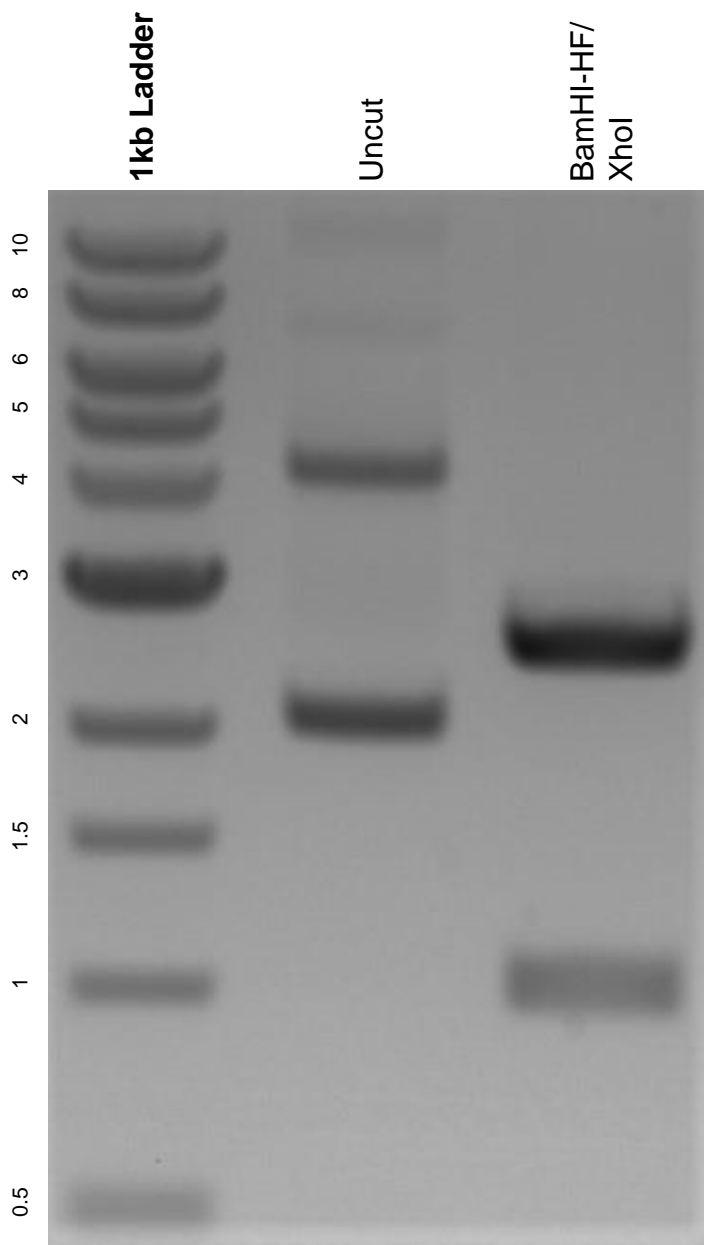


This gel depicts the NEB 1kb ladder and a digestion of the plasmid pENTR hH1-TERRA with the following enzymes: BamHI-HF and XhoI.

Plasmid 111381:
pENTR hH1-TERRA



DNA digested with BamHI-HF/ XhoI double digest for **2 hours**.
Gel: 0.8% agarose stained with 6 uL of ethidium bromide.
Ran for 1.5 hours at 100 volts.