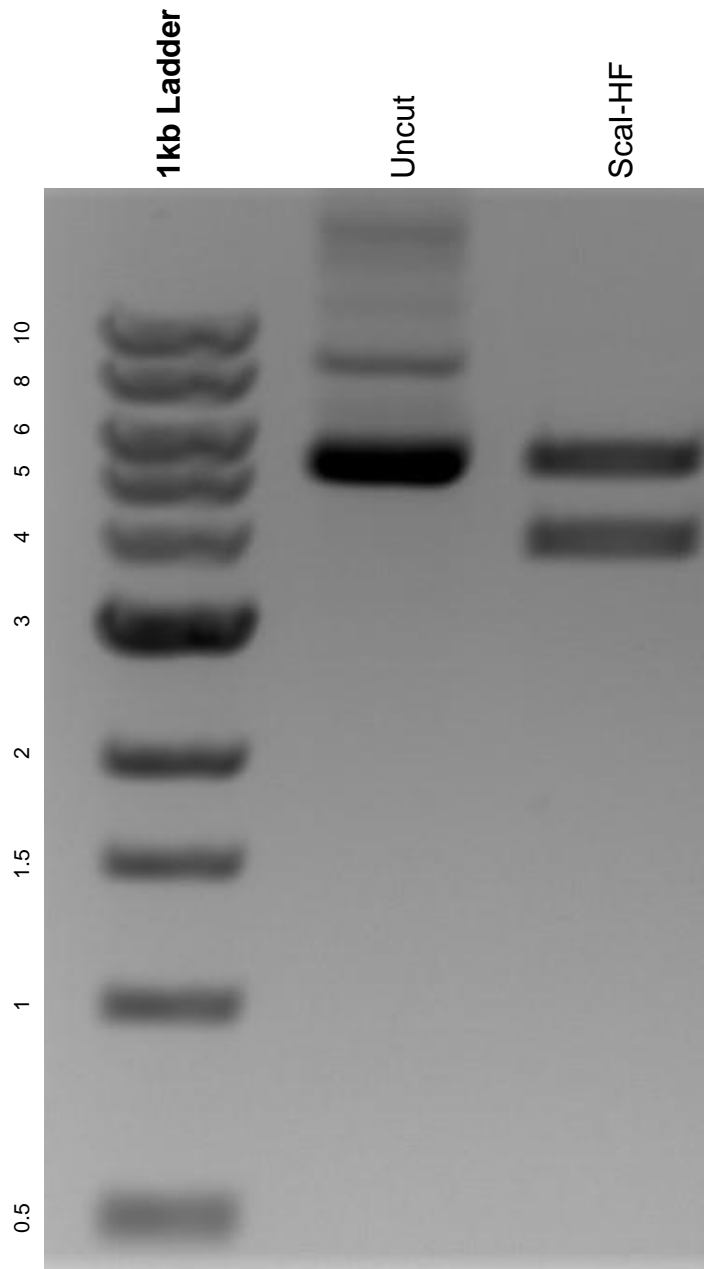


This gel depicts the NEB 1kb ladder and a digestion of the plasmid 33-G-X1-pEF1-puro with the following enzymes: Scal-HF.

**Plasmid 111604:**  
33-G-X1-pEF1-puro



DNA digested with Scal-HF single digest for **2 hours**.  
Gel: 0.8% agarose stained with 6 uL of ethidium bromide.  
Ran for 1.5 hours at 100 volts.