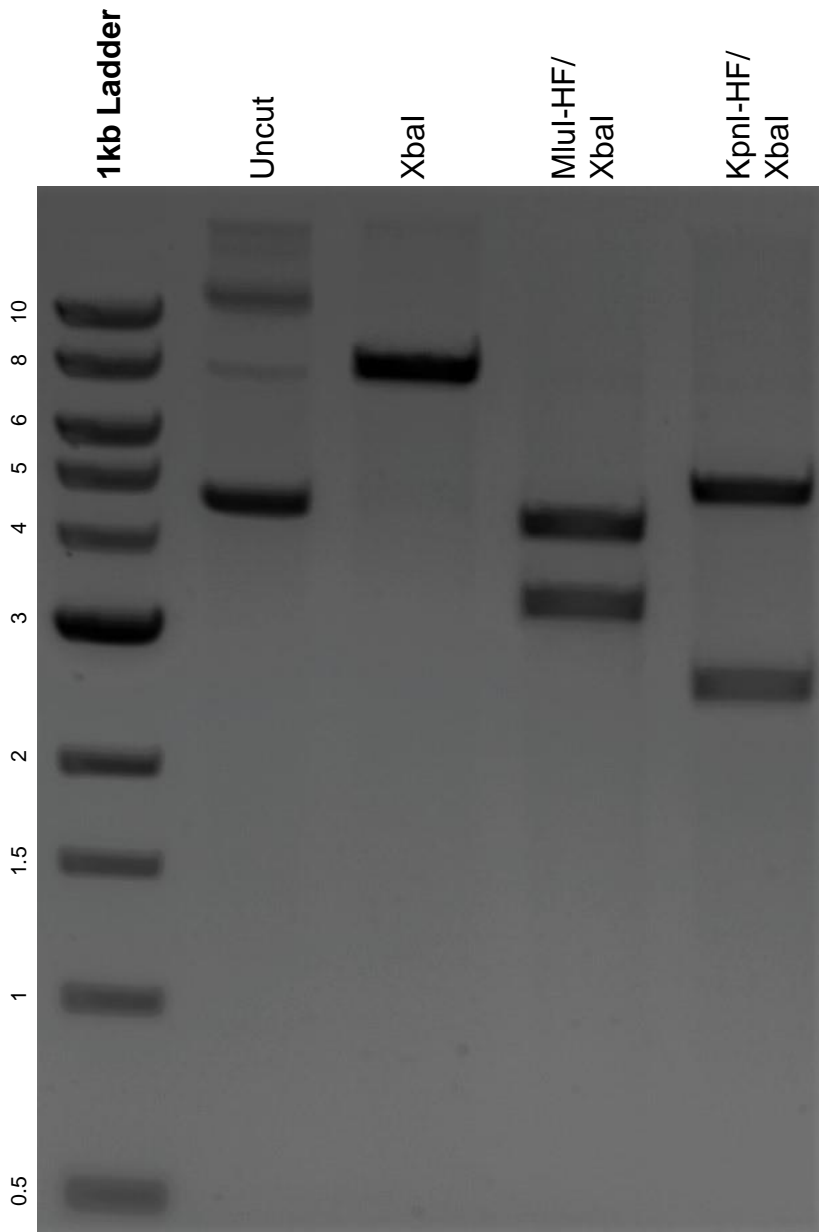


This gel depicts the NEB 1kb ladder and a digestion of the plasmid pcDNA3.1(+)/Puro/FA/GFP-C--Catulin-4 with the following enzymes: XbaI, MluI-HF, and KpnI-HF.

Plasmid 112844:
pcDNA3.1(+)/Puro/FA/GFP-C--Catulin-4



DNA digested with XbaI single digest and MluI-HF/ XbaI and KpnI-HF/ XbaI double digest for **2 hours**.

Gel: 0.8% agarose stained with 6 uL of ethidium bromide.

Ran for 1.5 hours at 100 volts.